



ALWAYS ONE IDEA AHEAD

INNOVATIVE. PERSONAL. FLEXIBLE.

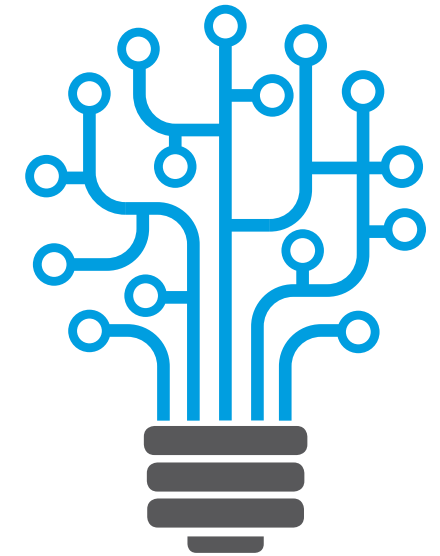
ALWAYS ONE IDEA AHEAD

Partner for optimal logistics solutions

Our company, docking Solution und Service GmbH, was founded in the year 2008 and is a supplier of innovative products, replacement parts and components in the area of loading technology, to specialist dealers and service companies.

Closer to the customer – through continuous communication

We offer you expert consulting, both as a partner and your supplier. Jointly we will find a manufacturer-independent solution, which is not only the best fit for you but also includes all required replacement parts.



Service and consulting

Service and consulting is a decisive success factor in the loading technology sector, which ensures efficient loading operations. Our experienced experts will support you, in finding the best solution with your customers.

With mydocking, you will benefit amongst others from the following advantages

- Customer-oriented solutions
- High quality standards
- Extensive product range
- Quick deliveries and optimized delivery procedures
- A clearly designed communications platform
- All products fulfil the required standards
- All products are manufactured in Europe
- Training courses
- Webshop – available around-the-clock via shop.mydocking.com
- 24-hour delivery of replacement parts

All of this means we are always one idea ahead.

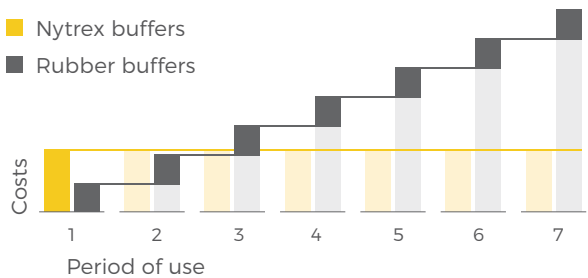
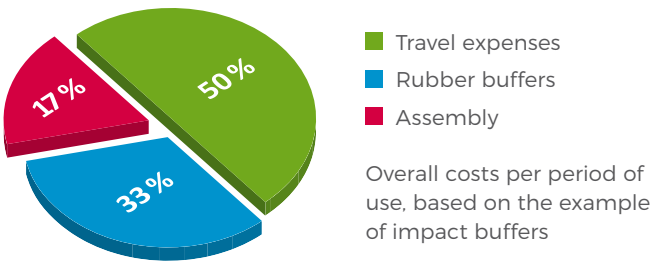
ECOLOGICALLY SUSTAINABLE AND ECONOMICALLY VALUABLE

Lifecycle costing – an advantage that pays for itself

A lifecycle calculation is an important characteristic in the development of our products. For you as a customer this means that the investment of a new acquisition pays for itself quite quickly, due to lower operating, maintenance and repair costs.

We guarantee

- High quality standards
- Low costs in the procurement of replacement parts
- Solutions that are individually tailored to your demands



ENERGY SAVINGS CAN BE CONTROLLED

The basis for efficient loading

The Novo i-Vision control unit contains the newest and environment-friendly technology. It features a unique power saving function, while offering an exceptional range of functions in an ergonomic design.

Standard configuration

- Service interval display
- Electronic protection on the inside
- Infrared interface
- Protection class IP 65, in conformity with the RoHS Directive
- Lockable mains switch

- Return button for transfer bridges
- CEE plug

Novo i-Vision combination control

- Integrated door control
- Integrated transfer bridge control
- "Auto Return" and "Auto Dock" functions
- User guidance with LEDs
- Integrated sensorless locking of transfer bridge and door

CUSTOMER-ORIENTED SOLUTIONS

We optimize your loading technology

We can provide short-term delivery of innovative products, at prices that conform to the market. You can place your orders with us around-the-clock and benefit from our reliability.

Guaranteed product compatibility

True to our slogan "Always one idea ahead" – only top quality is good enough for us. The technical design and specifications of our products fulfil all valid standards, and they always orient themselves on the on-site conditions at our customers, throughout Europe. That is how we can deliver products, whose quality frequently even surpasses that of the corresponding OEM parts.

Quick delivery

We optimize our delivery procedures by using lean processes, ensuring that we can fulfil your wishes better. Our products are delivered to you directly by a reliable logistics company, without any detours.

Top quality, delivered in the shortest time possible – simply one idea ahead at all times.



ONLINE-SHOP

Numerous replacement parts are now available on call

Every malfunction is a problem for your customer. That is why short delivery times are extremely important. mydocking keeps the most important replacement parts continuously in stock and, at the same time, guarantees replacement part compatibility to OEM parts. Perfect functionality and perfect quality are our standard.

Online shopping, for short delivery times

We offer you an extensive, all-round catalogue on loading technology. Make use of our advantages, and also let your customer profit from them. You will find a complete product range in our online shop - also outside of the usual business hours.

The product that you may have ordered, will already be dispatched the following morning.

Advantages

- Simple component identification
- Short delivery times
- Top quality at advantageous prices
- 24-hour availability each and every day
- Compatibility to original OEM components

Visit our 'always one idea ahead' website, and get detailed information about our services!

www.mydocking.com · shop.mydocking.com

COMPREHENSIVE SALES SUPPORT

Customized documentation

Whether it concerns product data sheets, energy certificates or other sales documents, we personalize all of these for your company.

Make our products into yours. Your logo on our products is no problem for us. Small animations, films or product samples, support you in explaining the products.

Our know-how for your success

Annual in-house events and activities make it possible for you to experience our new products live.

Training courses for sales and your service technicians are a basis for their success. Our experts train your employees, making them into loading technology specialists.

**We optimize your loading technology.
Innovatively, in the short term and cost-effectively.**



INTELLIGENT RETROFITTING FOR MORE EFFICIENCY

Optimization by means of the upgrades

mydocking – always one idea ahead! We also offer you retrofitting services for your loading technology equipment. This makes it possible for you to improve your logistic processes continuously. We are a competent specialist – benefit from our experience for improving your loading processes in the following areas:

- Safety
- Energy efficiency
- Automation

Doping for the next lifecycle

Always one idea ahead – our customized and complete replacement sets ensure solutions for customer problems, which will be good for many years to come.

- Replacement of the entire control and drive technology
- Newest state-of-the-art, in conformity with existing standards
- 70 % lower energy consumption
- Ensured availability of replacement parts
- All components in a single box
- Including assembly instructions

EXCHANGE SOLUTIONS

Replacement in the shortest time possible

If the repair of a transfer bridge should no longer make sense, and if an exchange for a new bridge should be required, then a replacement only takes a few hours. Daily loading operations will not be disturbed that way.

Replacement of a transfer bridge

- Short delivery times
- Short reconstruction time
- No concrete works required
- Available from stock in standard sizes

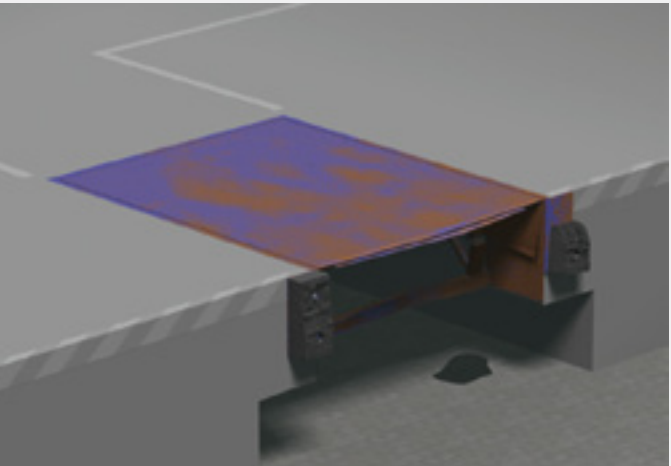
Advantages of a new transfer bridge

- Higher automation
- Inclusion of an energy saving function
- 70 % lower energy consumption
- Newest state-of-the-art technology

Flexible and many-sided solutions, for all types of specifications, make mydocking a reliable partner - always just that one idea ahead!

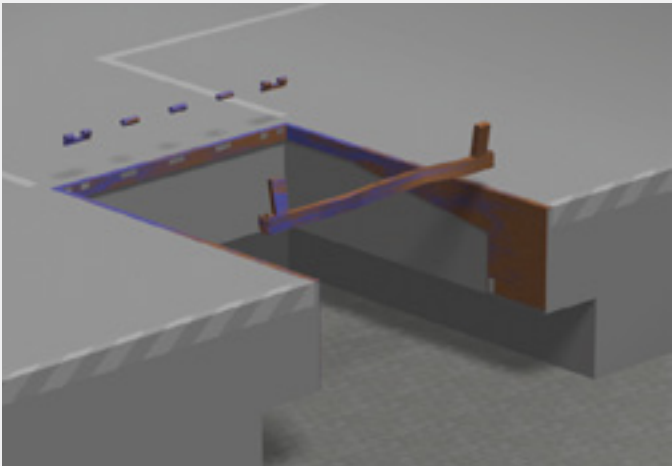


EXCHANGE IN 4 STEPS



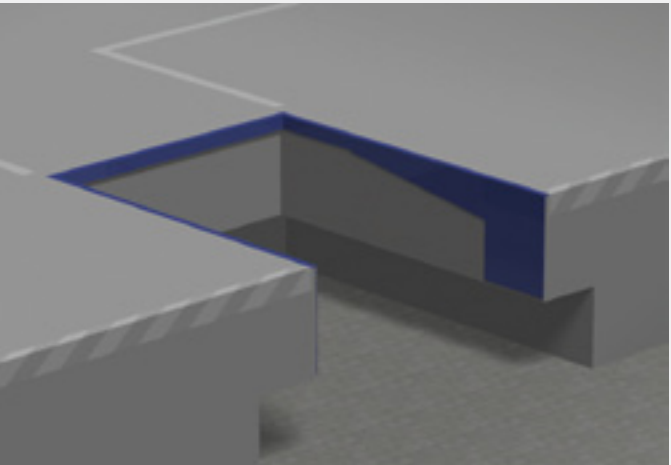
Step 1

Removal of a defective transfer bridge, ensuring that corresponding safety measures are observed.



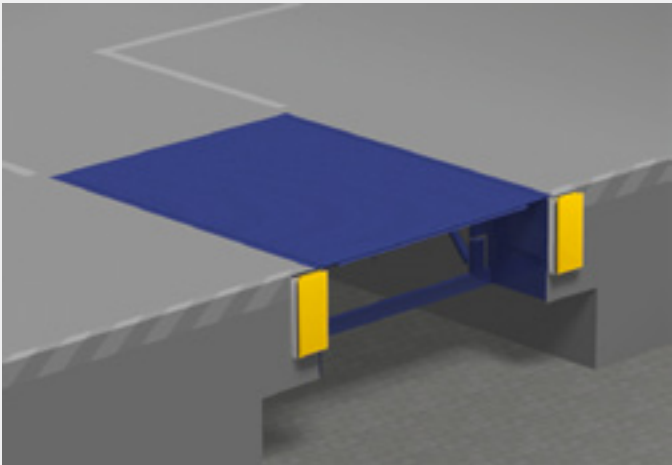
Step 2

The back hinge and possibly installed steel components must be removed.



Step 3

If required, the existing frame has to be reworked, including possible rust removal and paint works.



Step 4

Positioning of the replacement transfer bridge, proper alignment and subsequent attachment to the existing frame by welding.



Solutions for every requirements profile.
Dynamic, flexible and many-sided - always that one idea ahead!

REPLACEMENT SOLUTIONS

Replacement parts and more – again that one idea ahead.

Besides OEM replacement parts, mydocking offers a large number of sensible replacement solutions. Instead of exchanging a defective circuit board or using an outdated original control unit, mydocking offers suitable exchange solutions in the form of a one-time replacement with a universal control unit, which is suitable for many different brand manufacturers.

It speaks for itself that currently applicable standards are applied, as well as an optimized and efficient operating concept, which includes a patented energy-saving function. These control units are always available from stock, which means they can be delivered throughout Germany within a single working day – one more argument for this solution.



COMPLETE REPLACEMENT KITS

Exchange solutions

Many transfer bridges have to be exchanged, because replacement parts for the control unit are no longer deliverable, even though the steel construction that is still in a perfect state. We offer complete replacement kits – once more, one idea ahead from mydocking. These kits consist of all important control components, including accessories and an installation guide. As of a certain age of the equipment, a defect in the hydraulics or in the control unit can make the exchange of the entire drive technology necessary. This helps to avoid subsequent repairs and/or further downtimes. The latest technology, at a reasonable cost, will quickly amortize itself.

Service kits

Hydraulic hoses must be exchanged at the latest every 6 years, and hydraulic oil even every 2 years. mydocking provides service kits with or without oil. And, to simplify the work, we even deliver contain empty containers for the used oil. Quick and clean! Our exchange solutions make it possible for us, to react flexibly and quickly to all problems at the loading station.

That is how mydocking is always that one idea ahead.

MYDOCKING CREATES PERFECT CONNECTIONS

Stay up-to-date

You can do this via the mydocking.com platform, social media or other channels. We are always looking for possibilities, which allow us to acquaint you with the newest developments.

Always up-to-date

Our products will inform you about their current status. They provide you directly with maintenance, service and error information.

The LION 4.0 docking portal contains all up-to-date information

- Online information
- Error messages
- Maintenance reminders
- Component identification
- Repair instructions
- FAQ database

A continuous flow of information from our employees and our innovative products - this is what keeps mydocking always one idea ahead!

CONNECTIVITY

Progress through feedback

mydocking is more dynamic, more innovative and more effective than other suppliers of loading technology. An important reason for this is that, for perfecting your logistic processes, we always take current market trends and feedback from our customers and service partners into account in our developments.

We are continuously looking for a transparent exchange of information and an open dialogue, to enable innovative and future-oriented working.

That way we are always able to offer you loading technology products that fulfil your individual requirements, including the best results with regard to costs and energy efficiency.

Always one idea ahead - that is what makes mydocking an innovative and reliable partner for loading technology.



LION 4.0 – THE FUTURE OF YOUR LOGISTIC PROCESSES

Transparent overview

With LION 4.0, mydocking has developed a software for monitoring, presenting and optimizing the entire loading procedure. Intelligent systems make it possible for you to access the data of connected warehouses, at any time and from anywhere (via the Internet). The modern user interface leads the operator intuitively to the goal.

Always one idea ahead – start up into the future today! Get a decisive competitive advantage for your company now. By making all data accessible, LION 4.0 provides you with complete transparency, on the basis of which you can optimize and secure your loading operations.

Product characteristics

- Logistics 4.0 solution
- For optimizing every loading station
- Up-to-date status reports
- Reduction of downtimes to a minimum
- Pro-active reports help to reduce costs
- Intelligent assistants
- Enabling preventive maintenance

Transparency, efficiency, control and safety

With the LION 4.0 Docking Portal, you will have a complete overview of all your different company sites and the corresponding loading stations. We will provide you with comprehensive information, for analyzing and optimizing your operations.

Service / maintenance

Early detection at your loading station, of when a portal or loading bridge requires maintenance.

Everything at a glance

Extensive information is clearly presented by the dashboard, which informs you about your loading station at a glance. The required data can also be analyzed subsequently in a detailed presentation.

Reports

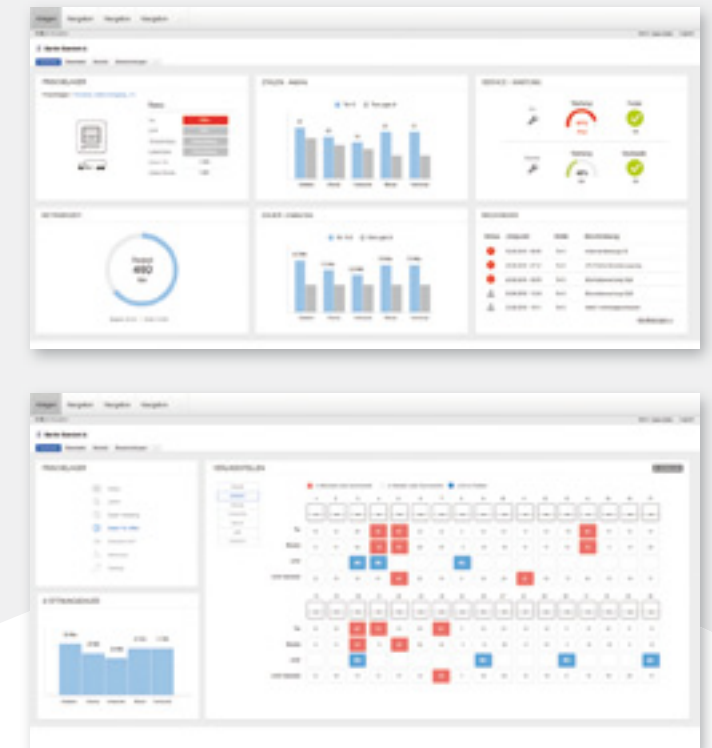
You will receive notifications on all reports, making it possible to reduce interruptions to a minimum.

Top performance

A transparent presentation of data, which had not been known up to then, makes a substantial increase of your performance possible and helps to secure a decisive competitive advantage for your company. Preventive maintenance will reduce downtimes to a minimum. Whenever an error occurs, LION 4.0 will inform you immediately about the problem.

Always fully informed – even when travelling

LION 4.0 is a web-based portal, which will provide you with all required data at a glance, anywhere and at any time. A map-overview function presents all of your company's sites in a clear manner, making direct insight into the operations of your warehouse possible at a mouse click.



The analyzer

LION 4.0 lets you prepare a variety of analyses, which can either be printed out automatically or regularly transmitted to various addresses. Transmission is carried out by the software automatically, without requiring action on your part. That way you can concentrate on the important things.

The messenger

Doors are opened after normal operating hours? They are open for operations longer than planned? LION 4.0 will automatically dispatch an e-mail message or SMS, to an address of your choice. That way you can react in a targeted manner and immediately. This gives you greater security at lower costs, thanks to LION 4.0..

LION4.0
DOCKING PORTAL



SAFETY FIRST

Safety is emphasized at mydocking

Too many accidents still happen during hectic loading operations. This makes it all the more important that the equipment ensures the highest level of safety. The safety standard, which has been defined by mydocking for its products, are a built-in feature of every equipment component in the entire product range, even if retrofitted.

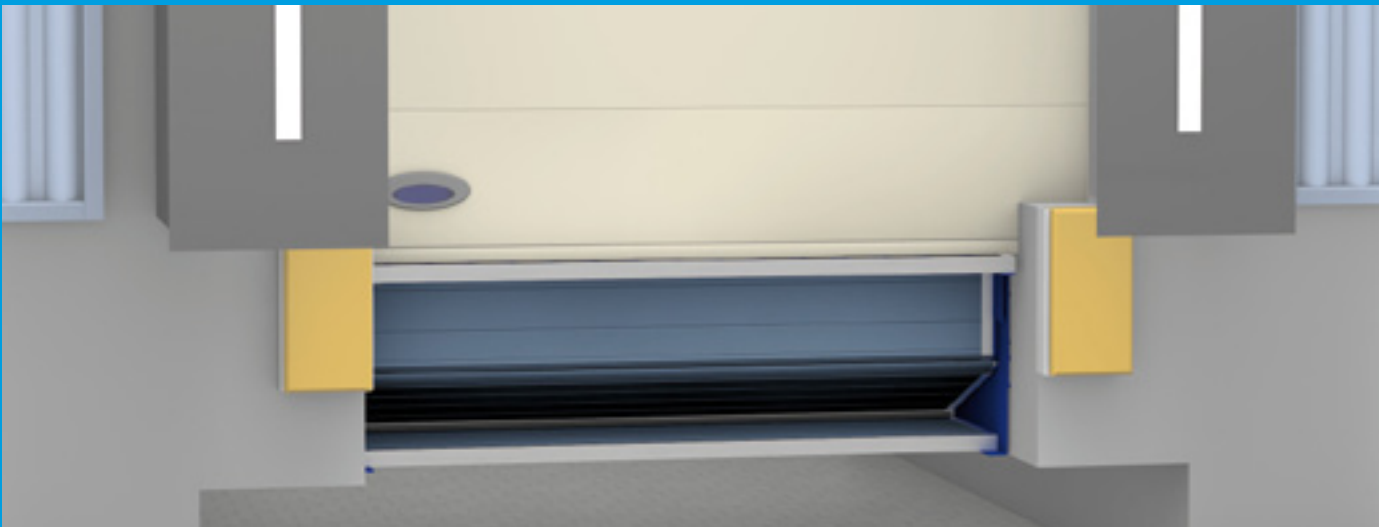
Important factors for more safety at the loading station

All hydraulic transfer bridges dispose over a two-cylinder emergency stop system, which shuts down the transfer bridge in case of an emergency. The simple operation of all control facilities avoids operator errors. LED lamps and combined control facilities not only make the operations easier, they

also increase efficiency. An optimal SLOD (significant likelihood of death) function ensures a safe opening of the freight lorry. Various Nytrex impact buffers, which are painted in a signal-yellow, reduce hazards during freight lorry docking. The NovoEASY electronic drive system offers additional communications possibilities with the driver of the lorry. The Calematic system blocks the freight lorry at the ramp. Slippage of the transfer bridge, for instance because the freight lorry rolls forward or drives away, is prevented in this way.

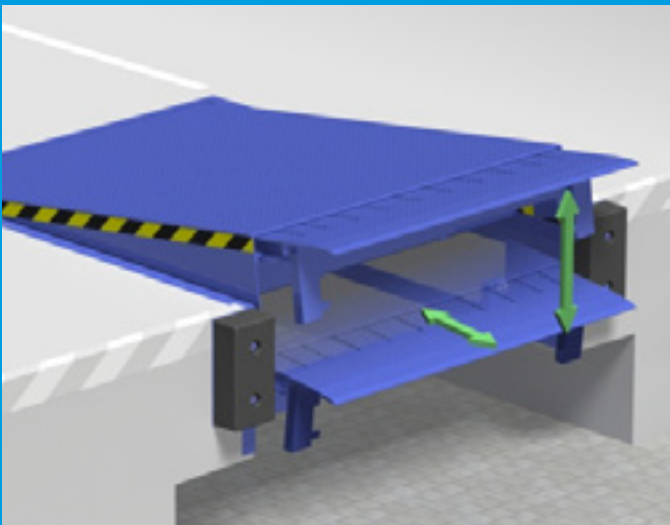
The ongoing development of safety features is emphasized in our work – that is why our products are always one idea ahead.

OVERVIEW DOCKING SOLUTIONS



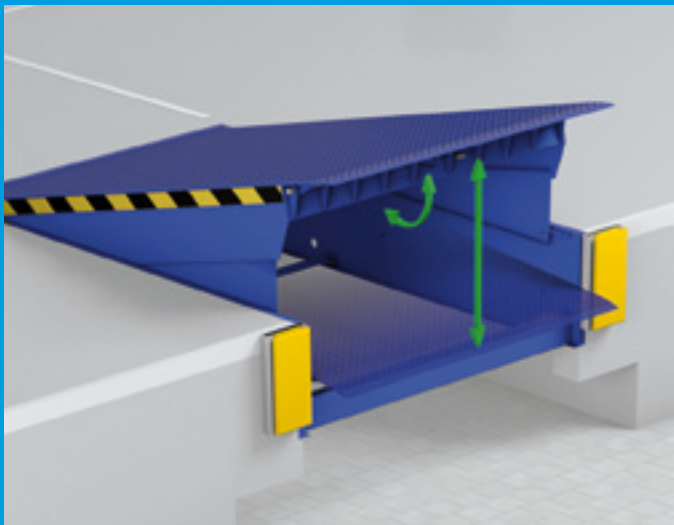
L730i

P. 20-21



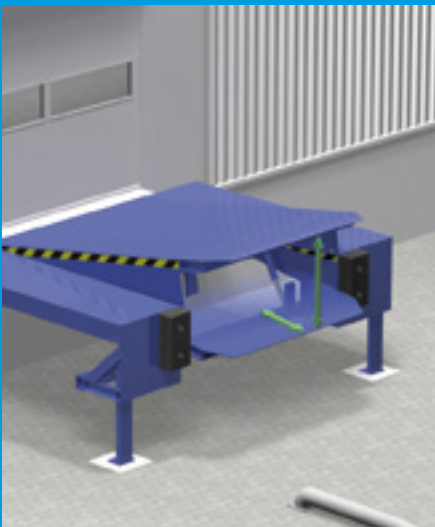
L530 | L530R | L550i

P. 22-24



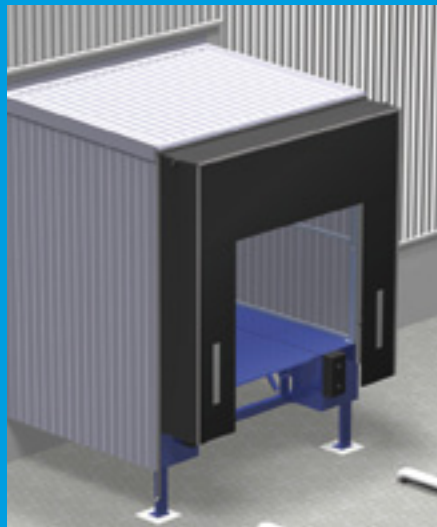
L320 | L320e | L320R | L350i

P. 25-28



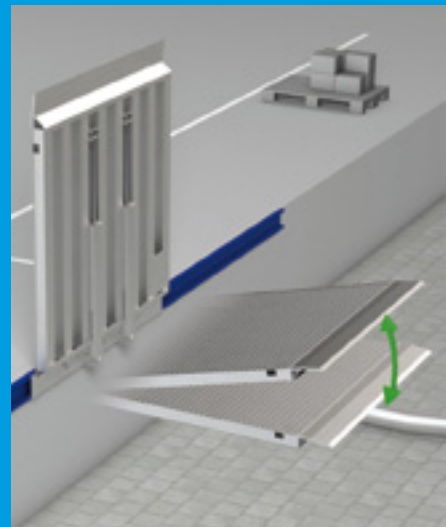
P1530 | P1320

P. 29-30



H100 | H50

P. 31-32



L150 | L100

P. 33



L730i

The ideal ISO loading bay for temperature controlled storage

The unique design of the L730i ensures the best possible insulation of the loading bay at any time. Also, during the loading process, no draughts can get under the dock leveller, thus preventing a cold bridge.

Product benefits

- Standard Green^{Plus} pack, up to 70 % energy savings
- Standard Ergo^{Plus} pack
- RoHS-compliant components
- Fully insulated, encapsulated design
- Acceleration forces are fed into the base plate
- Also fully insulated during the loading process
- Tail lift recess
- 700/1.000 mm telescopic lip
- 45 mm insulation
- NCI on board

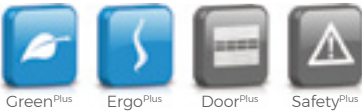


Control and operation

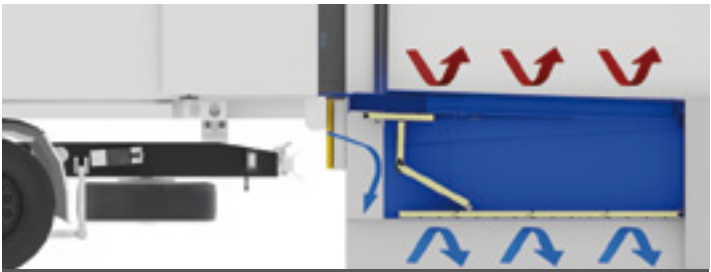
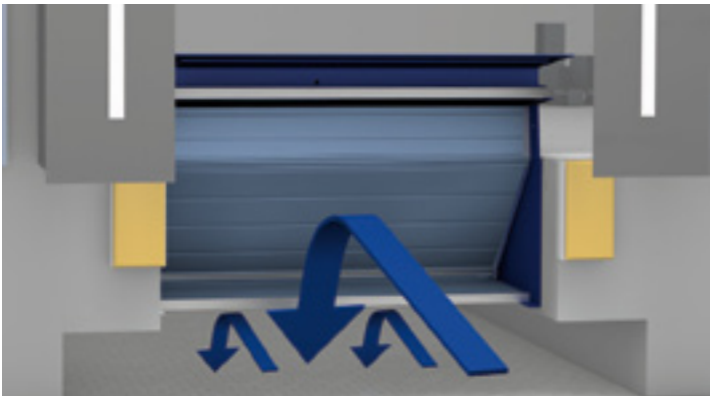
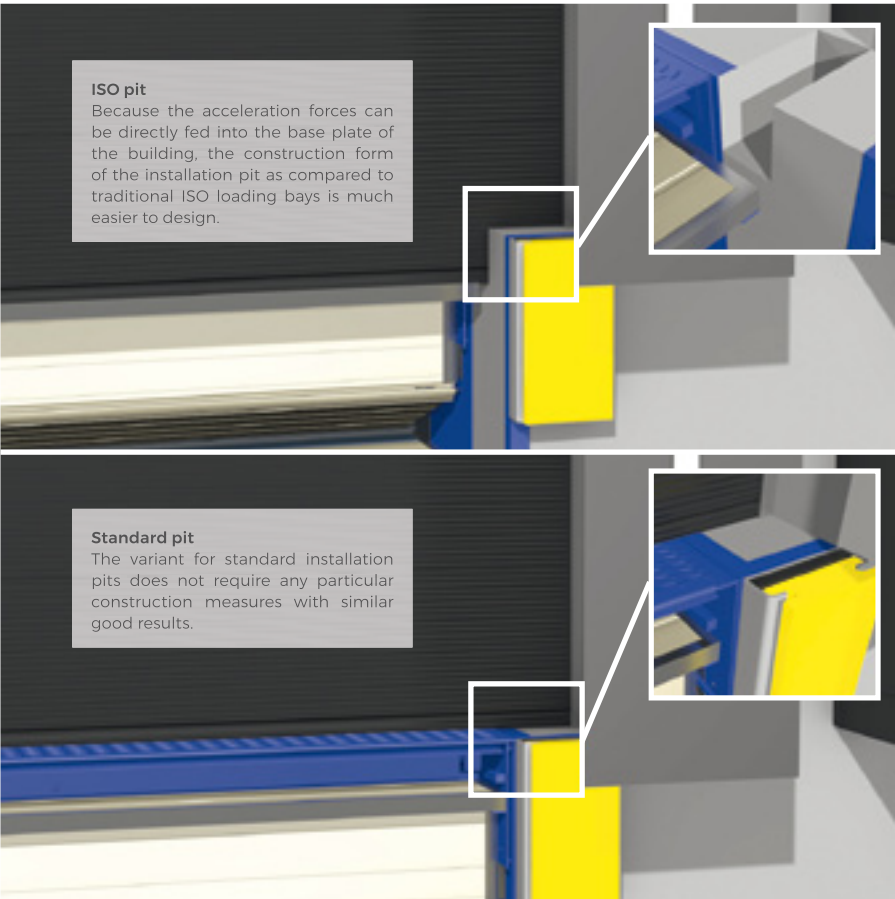
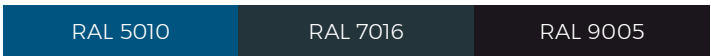
The dock leveller L730i is steered via the supplied control i-Vision TA.



Option packs



Standard colours



The picture shows a typical loading situation with the L730i. The exchange of different temperature conditions is prevented. The weather stays outside and the temperature in the hall remains almost constant.

Not just for cold storage

No other loading solution offers all these advantages in a single package. The rising cost of energy in combination with the attractive price make this intelligent solution interesting for all hot or cold warehouses.

Sustainability and energy savings

The standard Green^{Plus} package ensures the use of recyclable materials. Using a unique, patent-pending, power-saving function, the L730i saves up to 70 % of energy costs compared to conventional solutions and provides an important contribution to reducing CO₂ emissions.

Ergonomics saves costs

The standard Ergo^{Plus} package provides health protection for employees, lower costs for transport equipment and careful handling of the cargo.

Increased efficiency through automation

The Door^{Plus} package controls the dock leveller, the electrically driven sectional door, an inflatable shelter, and any other equipment – such as traffic lights and loading area lighting – in a single housing. In conjunction with the LED user guide, improper operation is impossible and damage is prevented. The AutoDock function moves all connected products safely back into the rest position and thus increases efficiency.

The future is already on board

The integrated Novoform Communication Interface (NCI) provides over 50 key parameters. The LION 4.0 Software lets you evaluate the data for efficient loading.

For further information on the i-Vision controller and the LION 4.0 Docking Portal, please refer to pages 5 and 16-17.

For further technical data, please refer to pages 34-35 or to the mydocking product data sheets.

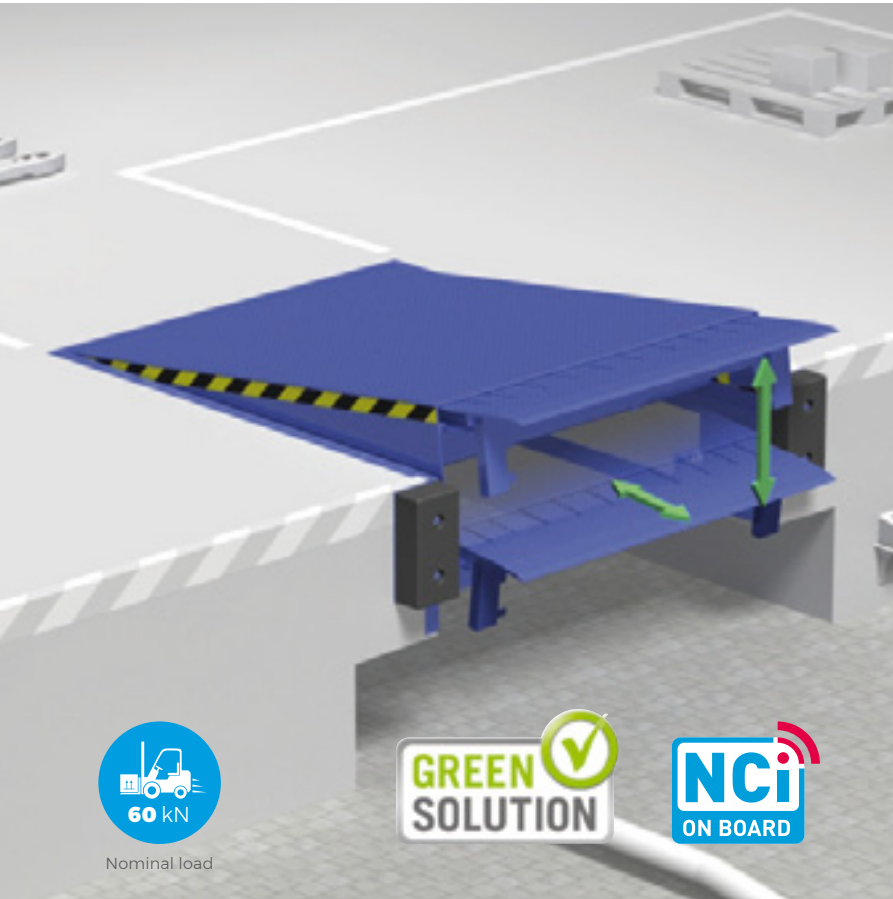
L530

Hydraulic dock leveller with telescopic lip for the most demanding requirements

The L530 is optimised for the enhanced market requirements and combines the benefits of various systems. The hydraulic dock leveller with telescopic lip is particularly robust and enables efficient loading thanks to modern controller technology. The new NovoSmart Drive system provides the easiest and most efficient operation with the least energy requirement.

Product benefits

- NovoSmart Drive system
- SLOD function prevents accidents
- Green solution product
- Up to 70 % less energy consumption
- Robust steel construction
- Quick installation thanks to the Z-frame
- Options packages for customised configuration
- NCI on-board



Control and operation

The dock leveller L530 is steered via the supplied control SuperVision 5.



Option packs



Standard colours



For further information on the i-Vision controller and the LION 4.0 Docking Portal, please refer to pages 5 and 16-17.

For further technical data, please refer to pages 34-35 or to the mydocking product data sheets.

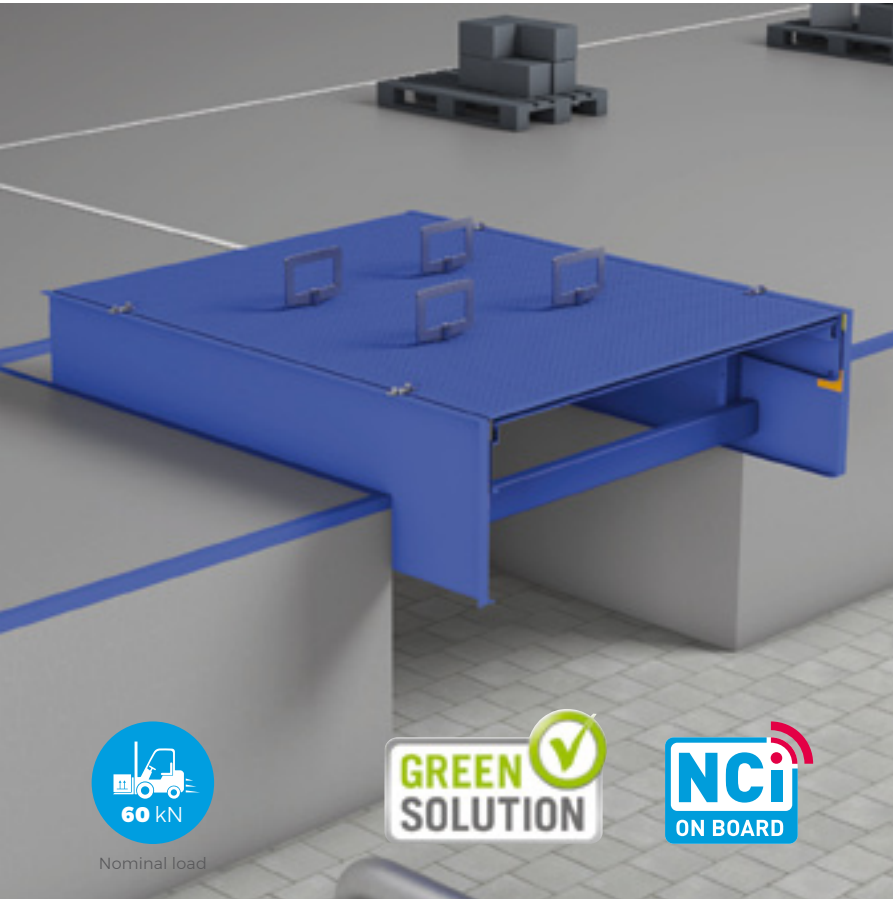
L530R

Hydraulic dock leveller with telescopic lip as replacement solution

The L530R is designed as a specific replacement solution and combines the benefits of various systems. The hydraulic dock leveller with telescopic lip is particularly robust and enables efficient loading thanks to modern controller technology. The new NovoSmart Drive system provides the easiest and most efficient operation with the least energy requirement.

Product benefits

- NovoSmart Drive system
- SLOD function prevents accidents
- Green solution product
- Up to 70 % less energy consumption
- Robust steel construction
- Quick replacement thanks to the specific Z-frame
- Options packages for customised configuration
- NCI on-board



Control and operation

The dock leveller L530R is steered via the supplied control SuperVision 5.



Option packs



Standard colours



For further information on the i-Vision controller and the LION 4.0 Docking Portal, please refer to pages 5 and 16-17.

For further technical data, please refer to pages 34-35 or to the mydocking product data sheets.

L550i

Hydraulic dock leveller with telescopic lip

With the integrated i-Vision TA control, the dock leveller is user friendly and safe to operate. Like all Green Solution products, the L550i contributes to cost savings thanks to CO₂ reduction technology. The L550i also has the new revolutionary NCI on board.

Product benefits

- Standard Green^{Plus} pack, up to 70 % on energy savings
- RoHS-compliant components
- Due to its higher dynamic load-carrying capacity of 100 kN, especially suitable for transported goods



Control and operation

The dock leveller L550i is steered via the supplied control i-Vision TA.



Option packs



Standard colours



For further information on the i-Vision controller and the LION 4.0 Docking Portal, please refer to pages 5 and 16-17.

For further technical data, please refer to pages 34-35 or to the mydocking product data sheets.

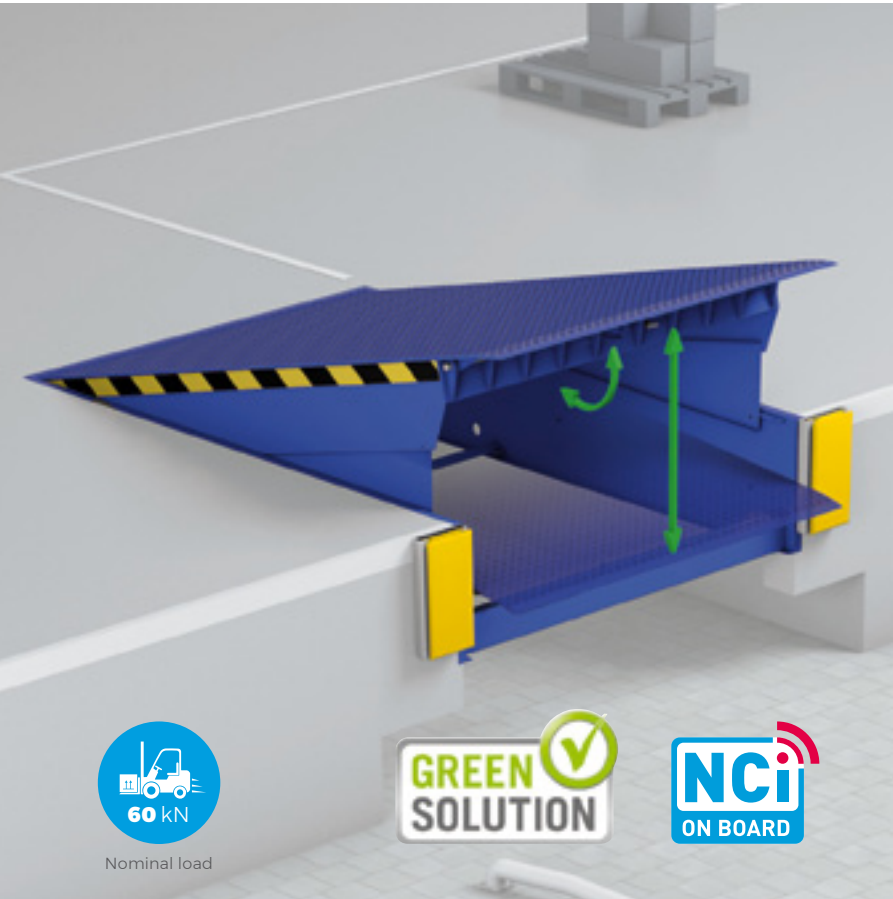
L320

Hydraulic dock leveller with hinged lip

Hydraulic dock levellers with hinged lip have been established as basic version in the loading technology. The L320 redefines this standard. It combines many years of experience and a robust steel construction with new design and the most modern control technology. Naturally, only materials are used that comply with current environmental standards.

Product benefits

- Hydraulic dock leveller with hinged lip
- Complete new design
- New Z-frame construction
- Option packages for individual configuration
- Robust steel construction
- Quick assembly



Control and operation

The dock leveller L320 is steered via the supplied control Classic Plus.



Option packs



Standard colours



For further information on the i-Vision controller and the LION 4.0 Docking Portal, please refer to pages 5 and 16-17.

For further technical data, please refer to pages 34-35 or to the mydocking product data sheets.

L320e

Hydraulic dock leveller with hinged lip

Hydraulic dock levellers with hinged lip have been established as basic version in the loading technology. The L320e re-defines this standard. It combines many years of experience and a robust steel construction with new design and the most modern control technology. Naturally, only materials are used that comply with current environmental standards. The 320e is transport optimized and is available in two versions (ECO and ECO^{Plus}).

Product benefits

- Hydraulic dock leveller with hinged lip
- Complete new design
- Option packages for individual configuration
- Robust steel construction
- Quick assembly
- Transport-optimized hydraulic dock leveller with hinged lip



Control and operation

The dock leveller L320e is steered via the supplied control Classic Plus.



Option packs



Standard colours



For further information on the i-Vision controller and the LION 4.0 Docking Portal, please refer to pages 5 and 16-17.

For further technical data, please refer to pages 34-35 or to the mydocking product data sheets.

L320R

Hydraulic dock leveller with hinged lip as replacement solution

Hydraulic dock levellers with hinged lip have been established as basic version in the loading technology. The L320R is designed as a specific replacement solution. It combines many years of experience and a robust steel construction with new design and the most modern control technology. Naturally, only materials are used that comply with current environmental standards.

Product benefits

- Complete new design
- Option packages for individual configuration
- Robust steel construction
- Quick replacement thanks to the specific Z-frame



Control and operation

The dock leveller L320R is steered via the supplied control Classic Plus.



Option packs



Standard colours



For further information on the i-Vision controller and the LION 4.0 Docking Portal, please refer to pages 5 and 16-17.

For further technical data, please refer to pages 34-35 or to the mydocking product data sheets.

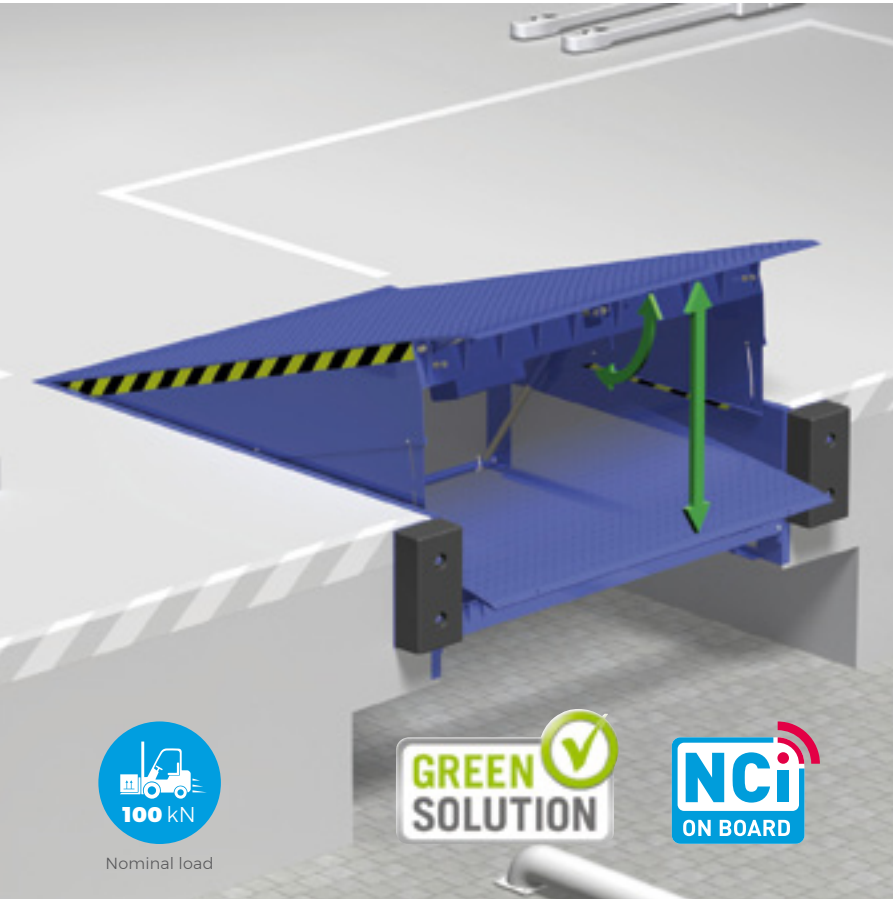
L350i

Hydraulic dock leveller with hinged lip

The L350i with hinged lip has established itself as the basic version in loading technology. With the integrated i-Vision HART control, the dock leveller is user friendly and safe to operate. Like all Green Solution products, the L350i also caters for CO₂ reduction and operating cost savings through optimised energy requirements. The stable steel construction remains unchanged. NCI provides a decisive competitive edge over all other dock levellers with hinged lip that are available on the market.

Product benefits

- Standard Green^{Plus} pack, up to 70 % energy savings
- RoHS-compliant components
- Due to its superior dynamic load-carrying capacity of 100 kN, especially suitable for transported goods



Control and operation

The dock leveller L350i is steered via the supplied control i-Vision HART.



i-Vision HART

Option packs



Standard colours



For further information on the i-Vision controller and the LION 4.0 Docking Portal, please refer to pages 5 and 16-17.

For further technical data, please refer to pages 34-35 or to the mydocking product data sheets.

P1530

Hydraulic dock leveller with telescopic lip in the steel frame

The steel frame allows the P1530 to be installed in front of the building and also serve as a basis for a loading bay. The hydraulic dock leveller with telescopic lip is particularly robust and enables efficient loading thanks to modern controller technology. The new NovoSmart Drive system provides the easiest and most efficient operation with the least energy requirement.

Product benefits

- see L530
- Green^{Plus} package, up to 70 % energy savings
- RoHS conform components
- Height adjustable support feet



Control and operation

The dock leveller P1530 is steered via the supplied control SuperVision 5.



SuperVision 5



SuperVision 5 SLOD



i-Vision TA



i-Vision TAD

Option packs



Standard colours



For further information on the i-Vision controller and the LION 4.0 Docking Portal, please refer to pages 5 and 16-17.

For further technical data, please refer to pages 34-35 or to the mydocking product data sheets.

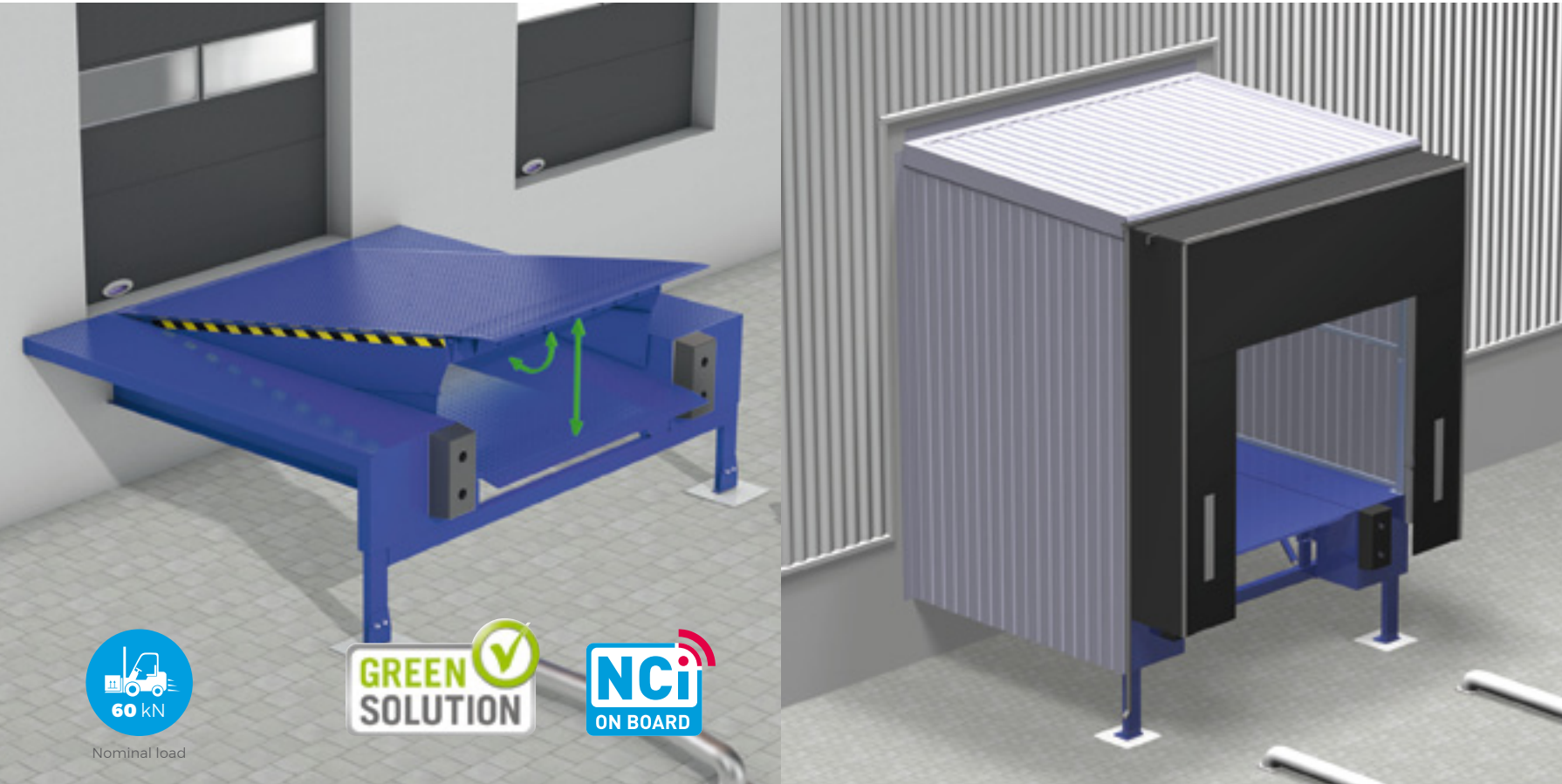
P1320

Hydraulic dock leveller with hinged lip in the steel frame

The steel frame allows the P1320 to be installed in front of the building and also serve as a basis for a loading bay. With the integrated Classic Plus controller, the dock leveller can be operated conveniently and safely. As with all Green Solution products, the P1320 also save costs thanks to the reduction in CO₂.

Product benefits

- see L320
- Green^{Plus} package, up to 70 % energy savings
- RoHS conform components
- Height adjustable support feet



Control and operation

The dock leveller P1320 is steered via the supplied control Classic Plus.



Option packs



Standard colours



For further information on the i-Vision controller and the LION 4.0 Docking Portal, please refer to pages 5 and 16-17.

For further technical data, please refer to pages 34-35 or to the mydocking product data sheets.

H100

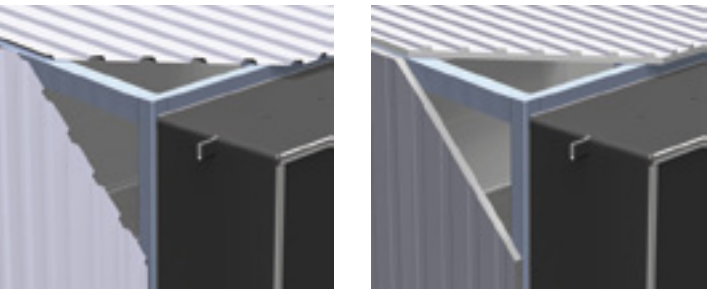
Loadhouse construction for platform systems P1530 and P1320

The H100 presents you with a variable concept for the use of telescopic lip and hinged lip dock levellers. The loading module can be given an in-line or angled structure where space is limited and offers additional storage space within the building. The P1530 and P1320 serve as a basis for the H100.

Product benefits

- Retrospective installation to existing loading bay
- Reduction of energy consumption for heated warehouses
- Simple site assembly and minimal disruption during installation
- Flexible forms of enclosure

Construction types of loadhouse



Type Standard:

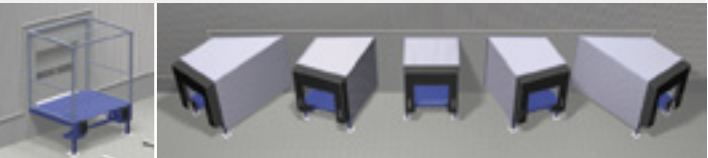
Cladding with trapezoidal metal sheet up to upper edge of steel platform.

Type ISO:

Cladding with 40 mm ISO panel up to upper edge of steel platform.

inside	outside	
RAL 9002	RAL 9002	RAL 9006

Basic frame H100 | Angled design (90, 75, 60, 45, 105, 120, 135)



For further information on P1530 und P1320, please refer to pages 29-30.

For further technical data on dock levellers in a steel frame, please refer to pages 34-35.

H50

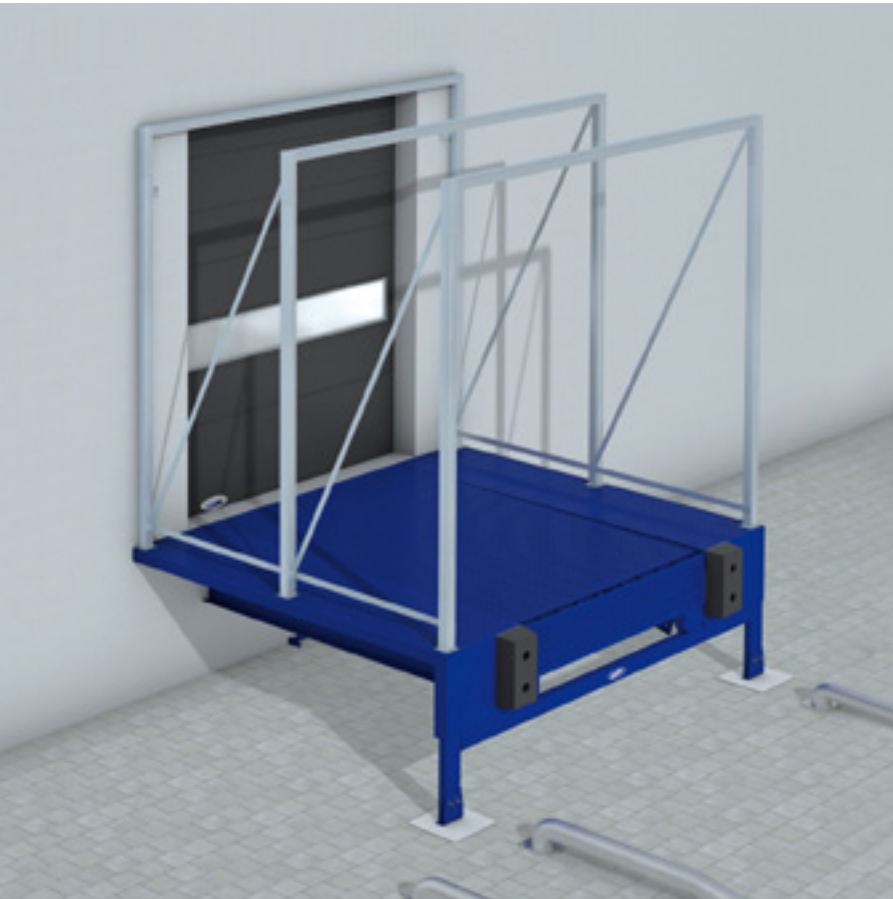
Loadhouse construction for platform systems P1530 and P1320

The H50 presents you with a variable concept for the use of telescopic lip and hinged lip dock levellers. The loading module can be given an in-line or angled structure where space is limited and offers additional storage space within the building. The P1530 and P1320 serve as a basis for the H50.

The H50 is only available as 90 degree version. The cladding made from ISO panel are attached horizontally. The H50 offers transport cost benefits.

Product benefits

- Retrospective installation to existing loading bay
- Reduction of energy consumption for heated warehouses
- Simple site assembly and minimal disruption during installation
- Flexible forms of enclosure



Construction types of loadhouse

Type Standard:
Cladding with corrugated metal sheet as sinusoidal wave up to upper edge of steel platform.

Type ISO:
Cladding with 40 mm micro profiled ISO panel up to upper edge of steel platform.

inside	outside	
RAL 9002	RAL 9002	RAL 9006



Type basic frame

For further information on P1530 und P1320, please refer to pages 29-30.

For further technical data on dock levellers in a steel frame, please refer to pages 34-35.

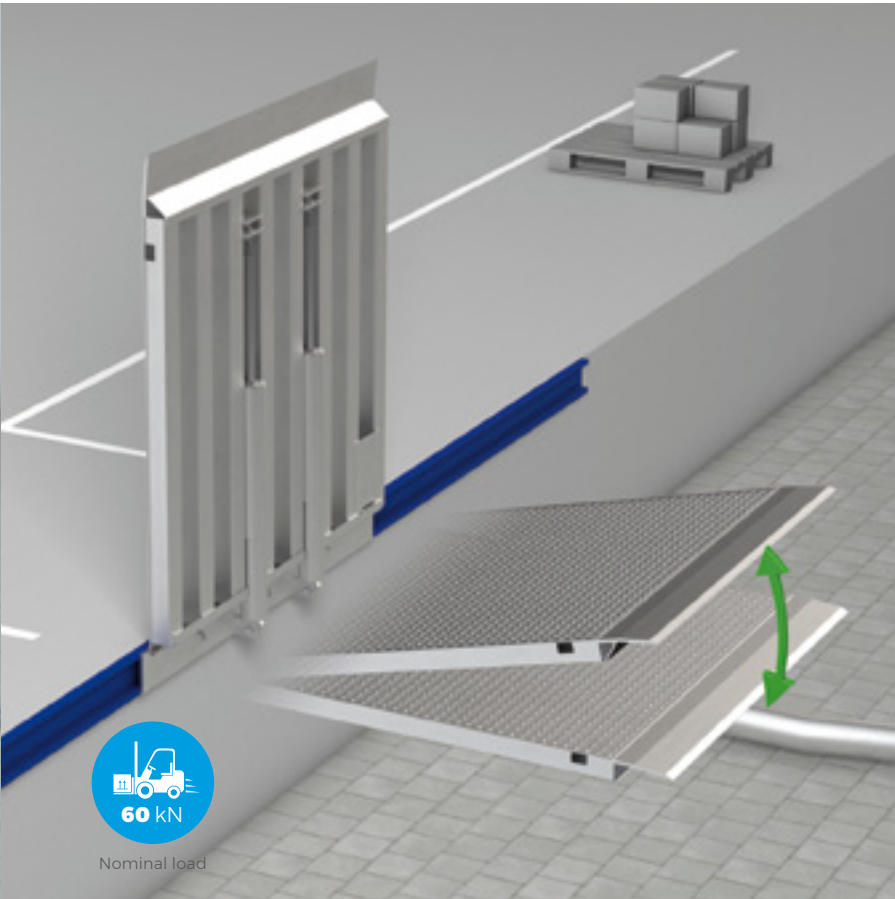
L150 AND L100

L150 – Mechanical dock leveller

The L150 can be operated very easily via a lifting rod. The dock leveller is mounted against the loading bay.

Product benefits

- Fixed or laterally sliding
- Provides a bridge between height differences of the vehicle and loading bay
- Use for internal and external loading bays
- Hot-dip galvanized



L100 – Mechanical dock leveller

The L100 can be operated very easily via a lifting rod. The dock leveller is mounted against the loading bay.

Product benefits

- Enables loading operations even in the most confined spaces
- Low-noise

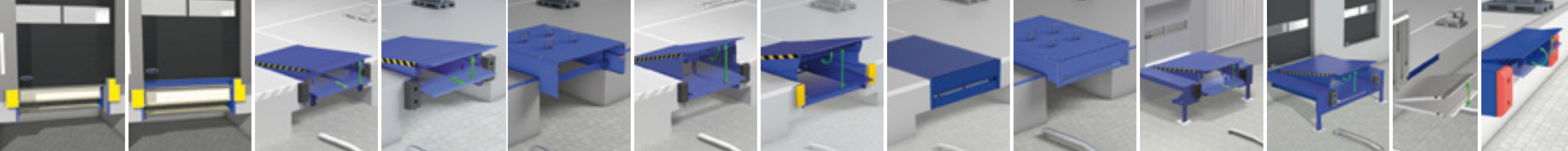
Standard colours

RAL 5010	RAL 7016	RAL 9005
----------	----------	----------

For further information on the L150 and L100, please refer to the mydocking product data sheets.

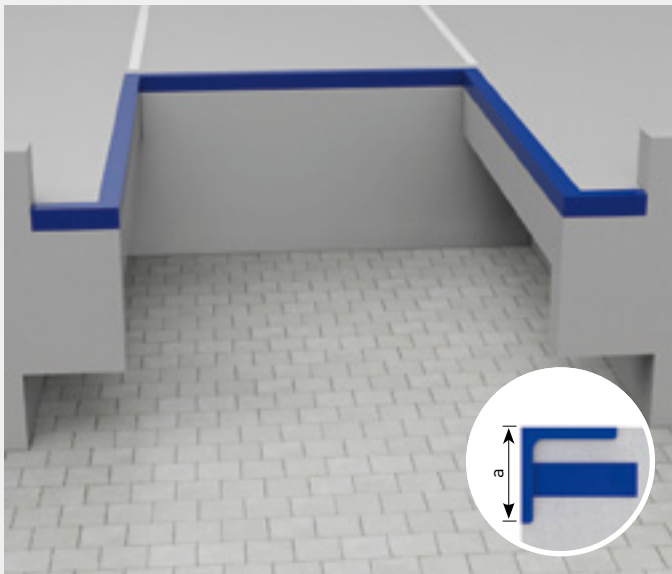
For further technical data, please refer to pages 34-35.

TECHNICAL DATA



Product characteristics		L730i ISO	L730i Standard	L550i	L530	L530R	L350i	L320	L320e	L320R	P1530	P1320	L150	L100
	with telescopic lip	■	■	■	■	■					■			
	with hinged lip						■	■	■	■		■	■	■
	ISO-Dock	■	■											
Option Packs	Green ^{Plus}	■	■	■	■	■	■	■	■	■	■	■		
	Green ^{SLOD}				■	■					■			
	Ergo ^{Plus}	■	■											
	Iso ^{Plus}			■	■	■	■	■		■	■	■		
	Door ^{Plus}	■	■	■	■	■		■	■	■	■	■		
	Safety ^{Plus}	■	■	■	■	■	■	■	■	■	■	■		
	Nominal load according to EN 1398 in kN	60	60	100	60	60	100	60	60	60	60	60	60	60
	Nominal lengths (NL) in mm	2000, 2500, 3000	2000, 2500, 3000	2000, 2500, 3000, 3500, 4000, 4500	2000, 2500, 3000	2000, 2500, 2750, 3000	2000, 2500, 3000, 3500, 4000, 4500	2000, 2500, 2750, 3000	2000, 2250, 2500, 3000	2000, 2500, 2750, 3000	2000, 2500 (2440), 3000, 3500, 4000, 4500	2000, 2440 (2500), 3000	1500, 1750, 2000	400
	Nominal widths in mm	2000, 2250	2000, 2250	2000, 2250, 2400	1750, 2000, 2250, 2400	1710, 1750, 1960, 2000, 2060, 2100, 2160, 2200, 2250	1750, 2000, 2250	2000, 2100, 2250	2000	1710, 1750, 1960, 2000, 2060, 2100, 2160, 2200, 2250	2000, 2250	2000, 2200, 2250	1500, 1750, 2000	1750, 2000, 2200
Pit depths	600 mm				up to 3000 mm (NL)	up to 3000 mm (NL)	up to 3000 mm (NL)	up to 3000 mm (NL)	up to 3000 mm (NL)	up to 3000 mm (NL)				
	700 mm/725 mm*			up to 2500 mm (NL)	up to 3000 mm (NL)	up to 3000 mm (NL)	up to 3000 mm (NL)				up to 3000 mm (NL)	up to 3000 mm (NL)		
	800 mm/830 mm**	up to 3000 mm (NL)	up to 3000 mm (NL)	at 3000 mm (NL)			at 3500 mm (NL)							
	900 mm	at 3000 mm (NL)	at 3000 mm (NL)	from 3500 mm (NL)			from 4000 mm (NL)							
	Telescopic lip / hinged lip length in mm	■ 700 ■ 1000	■ 500 ■ 700 ■ 1000	500	■ 500 ■ 1000	■ 500 ■ 1000	400	400	400	400	■ 500 ■ 1000	400		300
	Power supply	3 N-400 V/50 Hz/16 A	3 N-400 V/50 Hz/16 A	3 N-400 V/50 Hz/16 A	3 N-400 V/50 Hz/16 A	3 N-400 V/50 Hz/16 A	3 N-400 V/50 Hz/16 A	3 N-400 V/50 Hz/16 A	3 N-400 V/50 Hz/16 A	3 N-400 V/50 Hz/16 A	3 N-400 V/50 Hz/16 A	3 N-400 V/50 Hz/16 A		
	Protection class	IP 65	IP 65	IP 65	IP 65	IP 65	IP 65	IP 65	IP 65	IP 65	IP 65	IP 65		
	Motor rating in kW	max. 1,5	max. 1,5	max. 1,5	max. 1,5	max. 1,5	max. 1,5	max. 0,75	max. 0,75	max. 0,75	max. 1,5	max. 0,75		
Construction characteristic	Platform tear plate in mm	8/10	8/10	10/12	8/10	8/10	8/10	6/8	6/8	6/8	8/10	6/8	4/6	4/6
	Telescopic lip / hinged lip tear plate in mm	12/14	12/14	15/17	12/14	12/14	15/17	12/14	12/14	12/14	12/14	12/14		12/14
Bridging values upwards/downwards (telescopic lip 1000 mm)	Nominal length 2000, Pit depth 600				330 (405)/300 (315)	330 (405)/300 (315)	250/290	360/300	360/270	360/300				
	Nominal length 2000, Pit depth 700/725*/830**	350 (400)/370 (400)	320/340***	300/400	360 (440)/400 (435)	360 (440)/400 (435)	290/340				340 (430)/380 (440)	360/320		
	Nominal length 2250, Pit depth 600								360/270					
	Nominal length 2500, Pit depth 600				430 (500)/290 (280)	430 (500)/290 (280)	310/270	380/270	330/270	380/270				
	Nominal length 2500, Pit depth 700/725*/830**	400 (430)/370 (370)	370/310***	300/400	470 (540)/370 (390)	470 (540)/370 (390)	360/330				430 (500)/350 (390)	380/290		
	Nominal length 2750, Pit depth 600					400 (500)/270 (270)		390/270		390/270				
	Nominal length 2750, Pit depth 700					430 (530)/350 (370)								
	Nominal length 3000, Pit depth 600				420 (475)/270 (260)	420 (475)/270 (260)	360/270	400/260	270/270	400/260				
	Nominal length 3000, Pit depth 700/725*/830**	340 (370)/330 (350)	310/310***		480 (565)/400 (390)	480 (565)/400 (390)	430/330					400/290		
	Nominal length 3000, Pit depth 800/900**	400 (430)/370 (400)	370/350***	370/400							460 (550)/400 (440)			
	Nominal length 3500, Pit depth 800						520/350							
	Nominal length 3500, Pit depth 900			450/400							480 (540)/400 (420)			
	Nominal length 4000, Pit depth 900			450/400			570/350				520 (570)/420 (460)			
	Nominal length 4500, Pit depth 900			450/400			620/350				550 (600)/370 (380)			
	maximum admissible inclination according to EN 1398	12,5 %	12,5 %	12,5 %	12,5 %	12,5 %	12,5%	12,5 %	12,5 %	12,5 %	12,5 %	12,5 %	12,5 %	12,5 %
	Control	i-Vision	i-Vision	i-Vision	SuperVision 5	SuperVision 5	i-Vision	Classic Plus	Classic Plus	Classic Plus	SuperVision 5	Classic Plus	Operating rod	Operating rod
	i-Vision model	■ TA ■ TAD	■ TA ■ TAD	■ TA ■ TAD	■ TA ■ TAD	■ TA ■ TAD	■ HAR1	■ HA ■ HAD	■ HA ■ HAD	■ HA ■ HAD	■ TA ■ TAD	■ HA ■ HAD		
	Novoferm Communication Interface (NCI)	■	■	■	■	■	■	■	■	■	■	■		
Colours	RAL 5010 (gentian blue)	■	■	■	■	■	■	■	■	■	■	■		■
	RAL 7016 (charcoal grey)	■	■	■	■	■	■	■	■	■	■	■		■
	RAL 9005 (black)	■	■	■	■	■	■	■	■	■	■	■		■
	more RAL colour shades	■	■	■	■	■	■	■	■	■	■	■		■
	galvanized	■	■	■	■	■	■	■	■	■	■	■	■	■

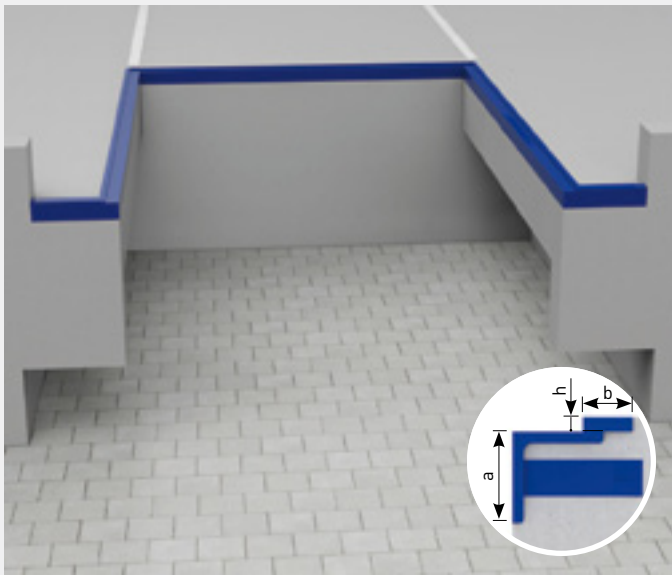
INSTALLATION METHODS



AX/AZ – Replacement solution for welding

In this method, the dock leveller is supplied with a flat-bar steel frame which is then welded to the steel profile available in the hall floor. This option is optimally suited for replacement dock levellers whereby the frame of the old dock leveller can remain in the floor. In most cases, replacement can be effected within one day.

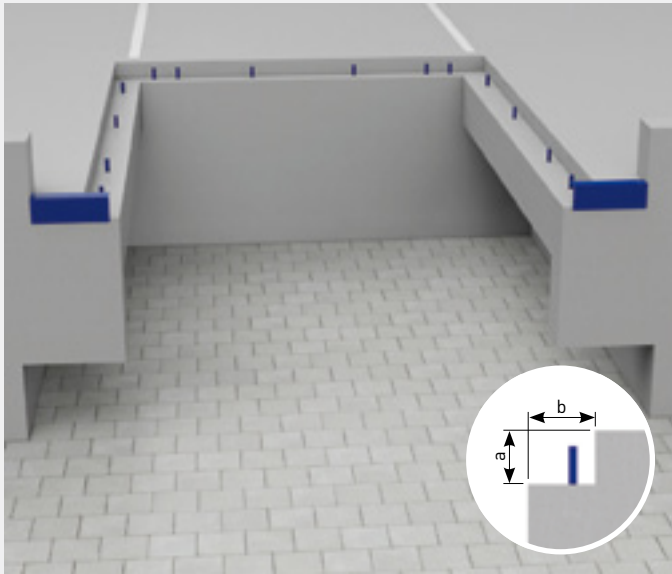
Angular steel a = min. 100 mm



BX/BZ – Precast frame for welding

The dock leveller is supplied with an angle frame whose leg is then inserted into the so-called preframe where it is then welded. This preframe consists of an angle with superimposed flat-bar steel which is inserted in the base plate before casting. The preframe can optionally be supplied by mydocking for on-site installation. This option is preferred to be able to complete the hall floor independently from the dock leveller. The dock leveller can then be supplied and installed at another point in time.

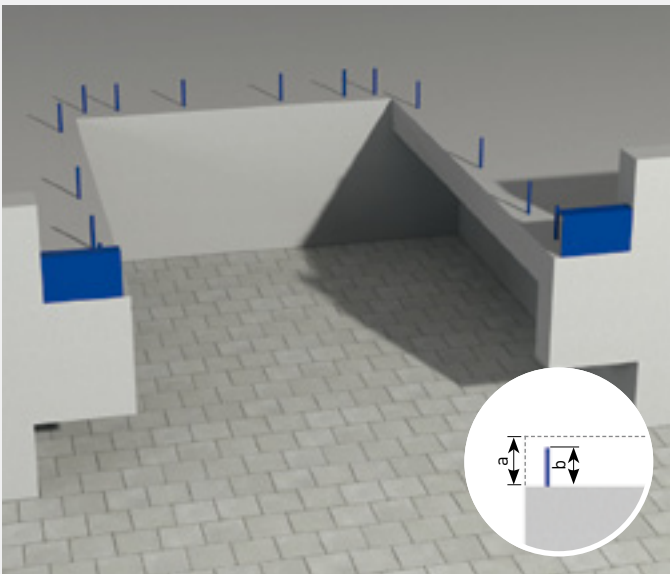
Angular steel a = 80 mm, s = 8 mm
Flat steel b = 25 mm, h = 10 mm



CX/CZ – Dock leveller frame for concrete-casting

In this variant, there are wall anchors attached to the dock leveller frame which are welded to the on-site concrete steel dowels before being concrete-cast. In this option, the pour height is max. 110 mm. The advantage of this option is the easily realised pit. In addition, the hall floor can be fully completed with the exception of the circular groove.

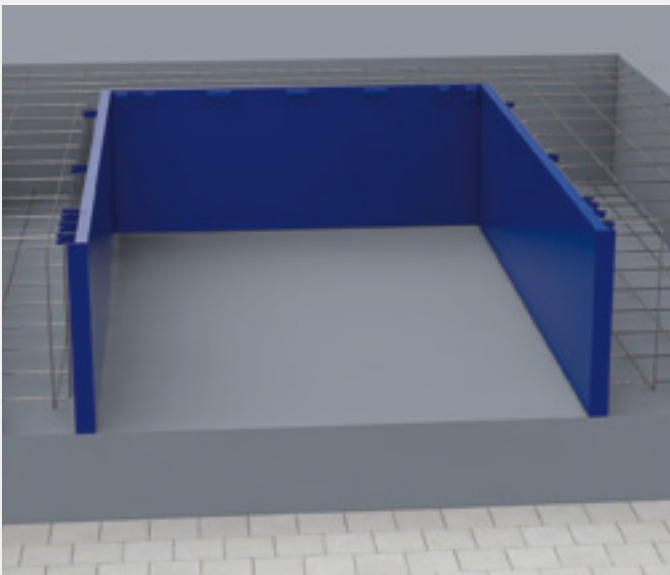
a = 100 mm, b = 150 mm



DX/DZ – Dock leveller frame for higher concrete-casting

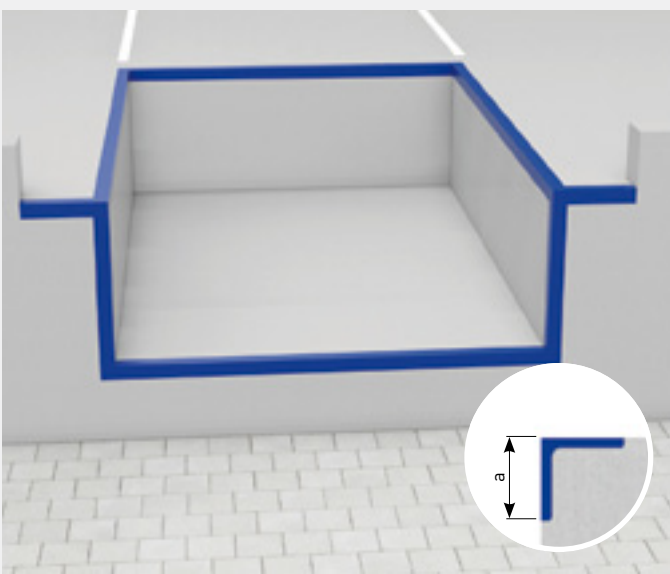
This model is very similar to the previously described method CX/CZ; the only difference is the pour height. The increased frame is supplied with lateral and back jack screws. In this variant, floor constructions of 100 - 250 mm can be covered. This method is frequently used for large quantities and for the use of concrete finished parts.

a = 100 to 250 mm (pour height)



EX/EZ – Box Model for concrete-casting

In this option, the dock leveller is designed as a box closed on three sides. This box is fixed to the floor, connected with reinforcement and then serves as formwork. In this very simple method, the dock leveller is already supplied and installed in the early construction phase, making the labour-intensive preparation of a pit superfluous. Due to its simplicity, this method is now frequently used in the case of upgrades of dock levellers in existing buildings and finished floors.



FX/FZ – Pit model as standing model

In this model, the dock leveller is welded to the steel profiles available in the pit floor in the front area. The dock leveller leans on the pit floor and/or in the case of a tail lift recess of the dock leveller on a wall pedestal in the back area. Three sided circular edge protection angles in the floor are recommended as pit lining. This variant is frequently used for replacement without tail lift recess.

Angular steel a = 50 mm, s = 5 mm

REPLACEMENT SOLUTIONS

Modernisation of your loading bay – fast and cost-effective

Thanks to the comprehensive product range and the necessary know-how, mydocking is in a position to deliver solutions to customers which meet their specific requirements.

Besides many customer-specific adjustment possibilities, mydocking developed the solution for a fast and reliable exchange of existing dock levellers.

At the end of the life cycle of a dock leveller, things generally have to go very fast. The existing product suddenly breaks down and can no longer be used from one day to the other.

Due to our special concept, the complete exchange can be realised within one day, which means that the shortest possible down times can be ensured (Fig. 1-3).

Your benefits

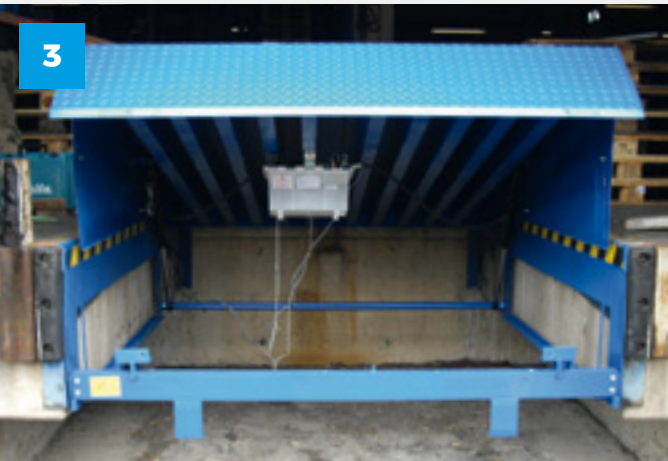
- No concrete work necessary
- Exchange within one day possible
- Standard sizes can generally be supplied ex stock
- No additional pit adapter necessary



1 The old defective dock leveller is dismantled and the remaining steel parts prepared for the installation of the mydocking dock leveller.



2 The new dock leveller is inserted into the prepared frame, aligned, and then welded to the frame.



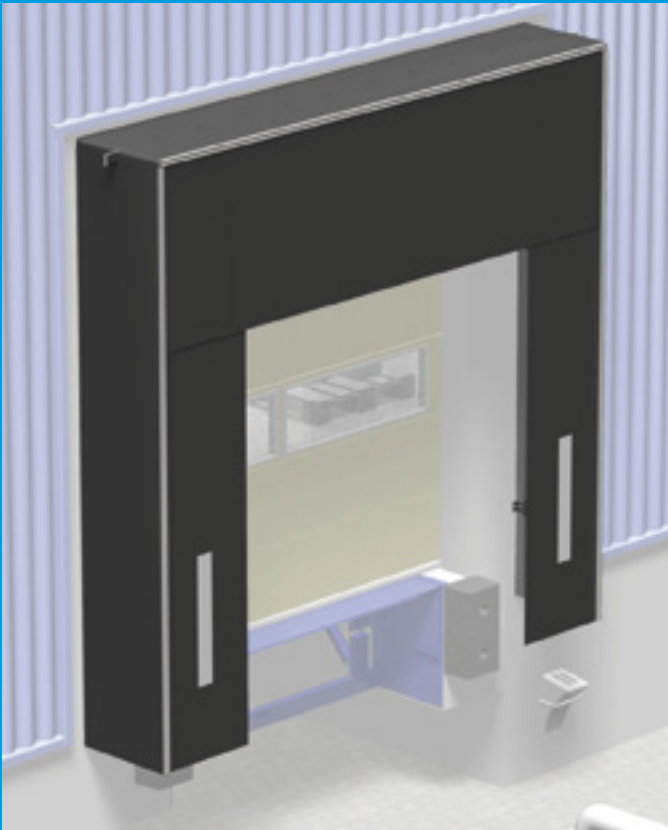
3 Once the mydocking dock leveller has been electronically connected and subjected to a trial run, the loading bay is already ready for further use.

OVERVIEW DOCK SHELTERS



S620

P. 40



S420

P. 41



S401

P. 42



S220

P. 42

S620

Inflatable dock shelter with modular structure

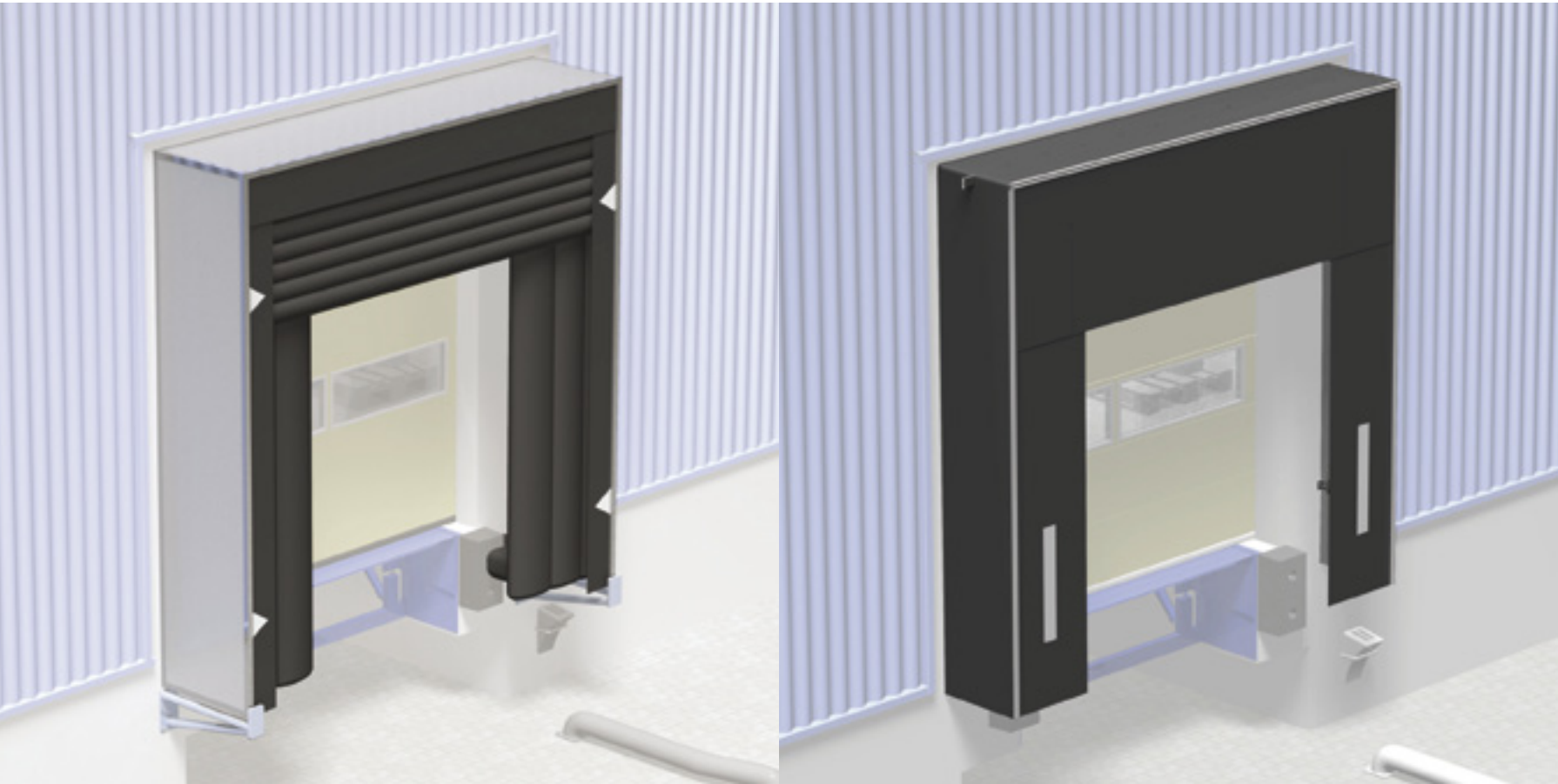
As part of the integrated loading solution, the S620 is automatically actuated.

After actuating the door OPEN switch, the bellows of the S620 are first inflated, and then the door opens automatically. At the end of the loading process, the dock leveller is first driven into resting position with the AutoDock function, then the door is closed, a possibly connected loading lamp is switched off, the S620 is vented, and an exterior traffic light switches to green.

This automatic sequence increases efficiency, saves energy costs, and prevents possible damage caused by removing the lorry too early while the bellows are still inflated.

Product benefits

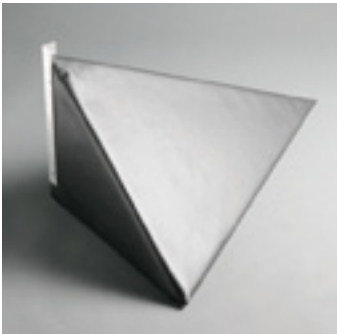
- Bellows made from PVC or especially supple Cordura®
- Perfect sealing
- Energy-saving
- Twin motors for fast and safe inflating
- Integrated elements of the loading solution



S620 in non-inflated condition



Pads



Bumpers



S420

Collapsible dock shelter with aluminum profiles

Dock shelters with collapsible design protect against draughts, rain, and wind. They ensure perfect sealing between lorry and building and protect against energy loss and possible damage to the goods. The built in rain water channel deflects water from the roof to the outside of the shelter.

Product benefits

- Rain water channel on the side inside
- Flexible roof construction
- Aluminium frame construction
- No visible screws on front side
- Designed for universal use

S401 AND S220

S401 – Niche seal

The S401 enables a continuous building front due to being directly inserted into the recess of the building. As a result, the appearance of your system is definitely improved.

Product benefits

- 3 mm thick PVC curtains with high restoring force for perfect sealing
- Installation in on-site front building on Halfen® cast-in channels or with angle sections



S220 – Sealing pad

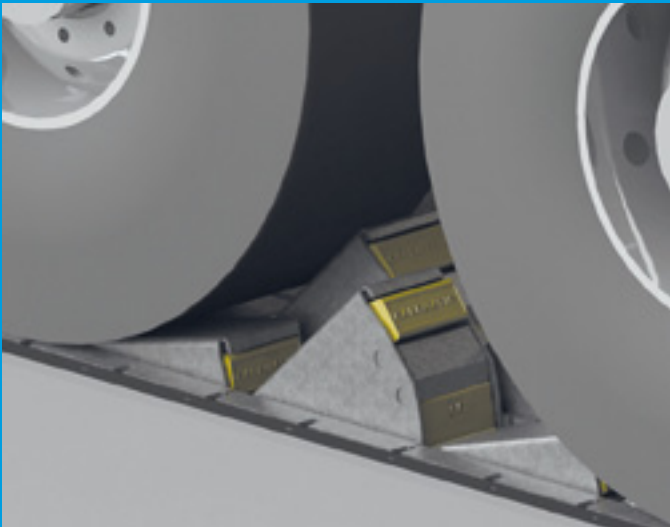
Sealing pads offer protection from draughts, rain and wind. They provide perfect sealing between lorry and building and protect against energy loss and possible damage to the cargo.

Product benefits

- Excellent sealing system for narrow doors and standardised vehicle fleet
- Watertight welded covers
- Verticle pad guide stripes
- Different pad shapes possible

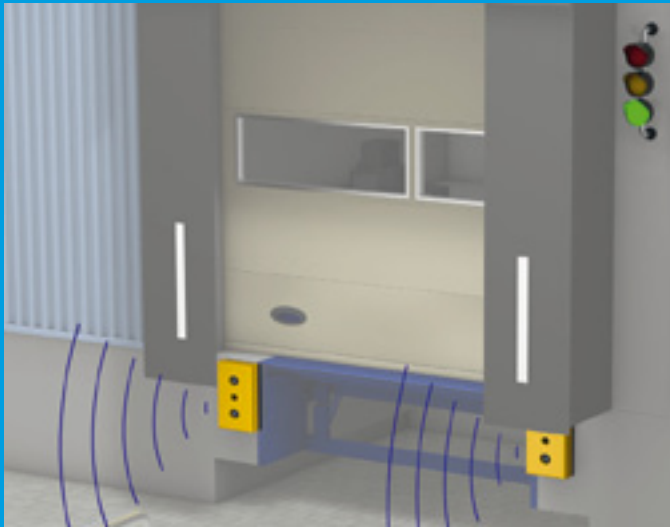


OVERVIEW ACCESSORIES



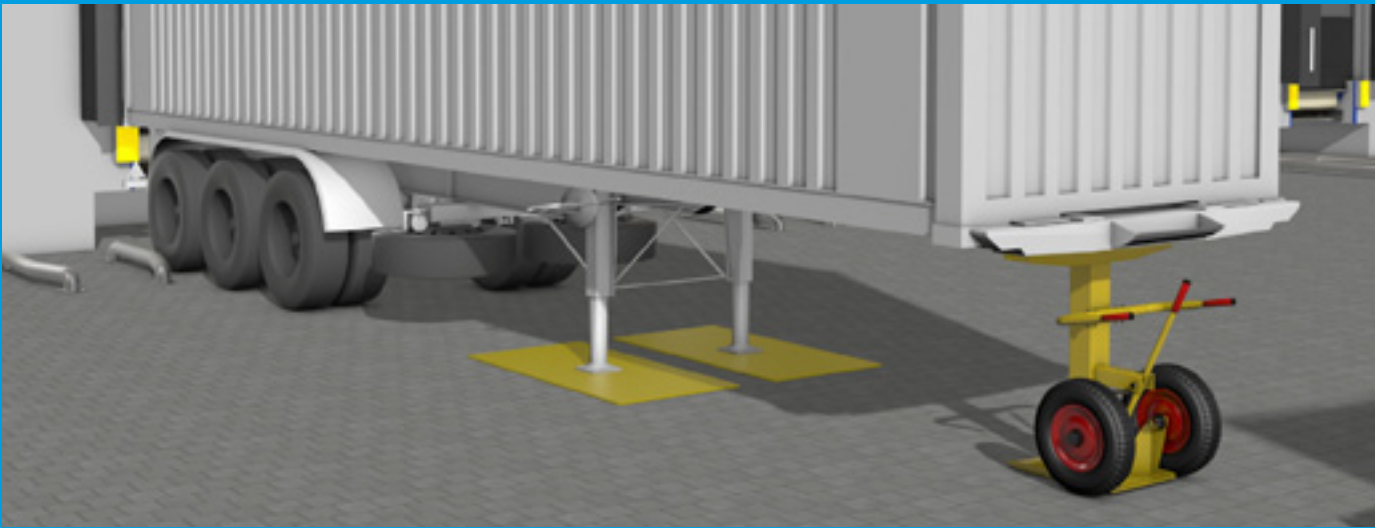
Calematic

P. 44-45



NovoEASY

P. 46



Nytrex Trailer Plates | Safety Jack

P. 47



Bumper systems

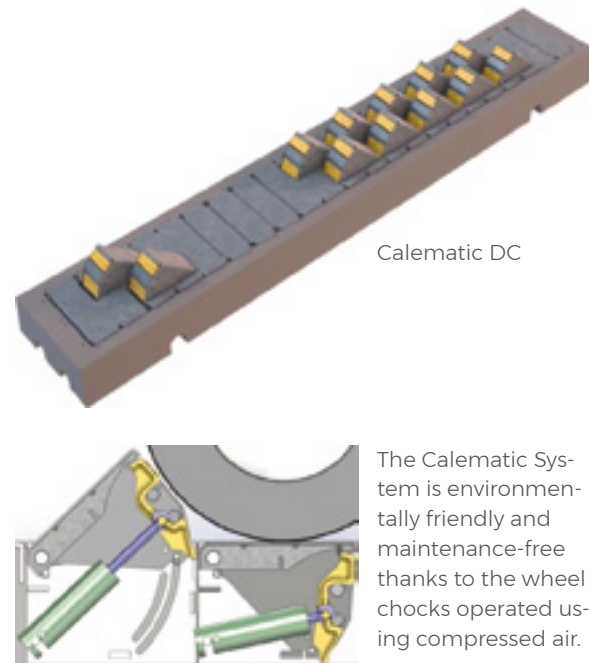
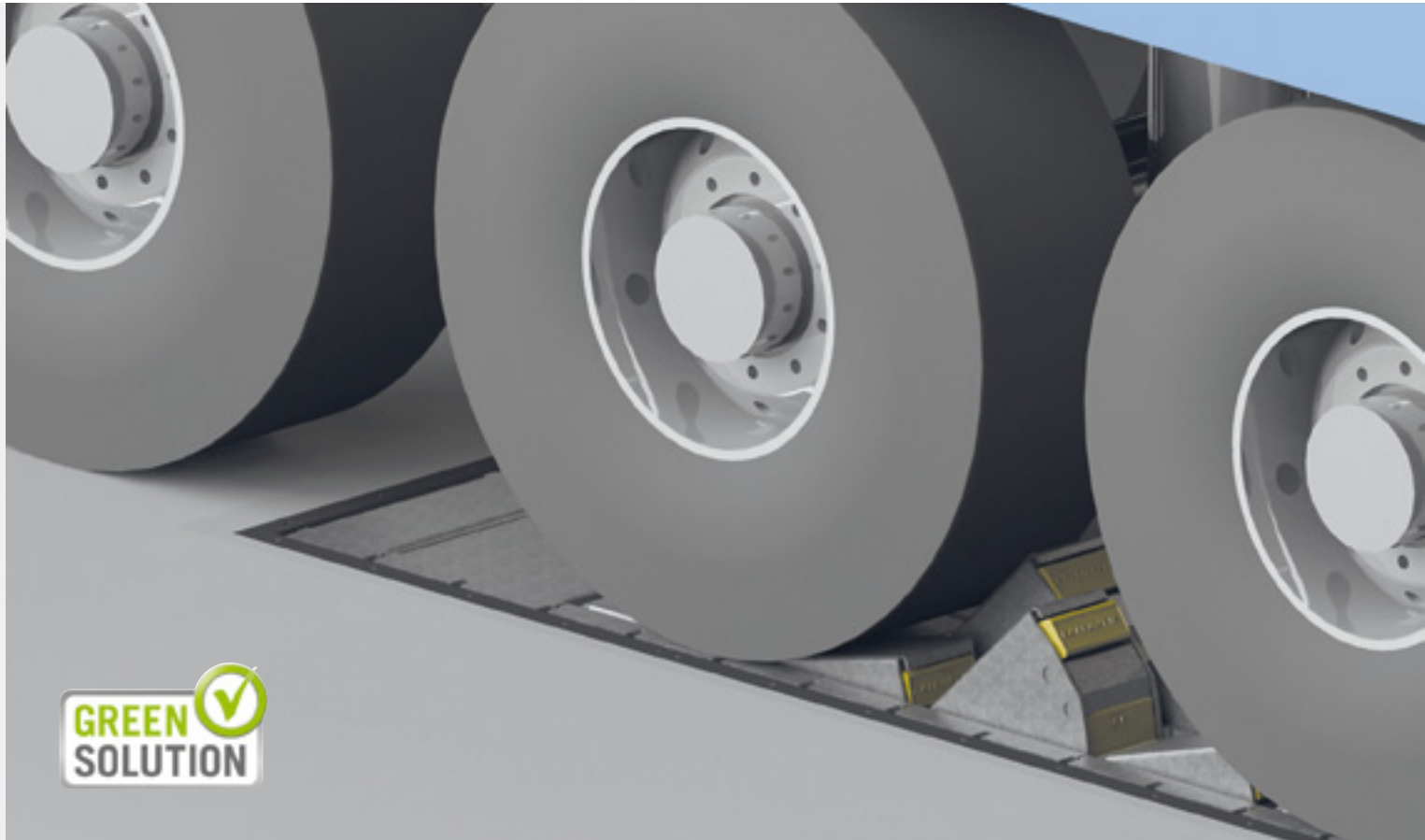
P. 48-49

CALEMATIC SC AND DC

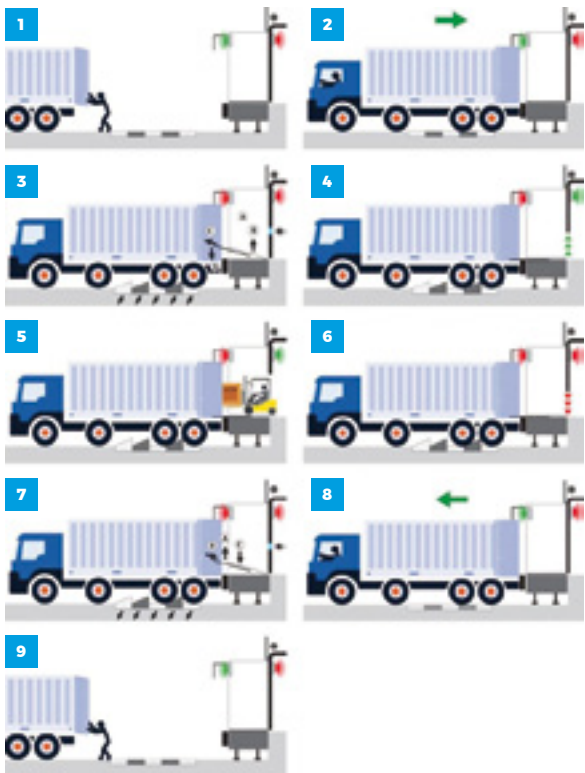
HGV restraint systems sustainably reduce the risk of accidents at the loading bay. The new Calematic DC is an advancement of the Calematic system that has been proven over the course of decades. On top of the already established advantages, the new system offers increased security in the loading process, at a lower overall cost.

Product benefits

- Easy operation and handling
- Facilitates safe and easy docking of the truck
- No obstructive fittings that can interfere or become damaged
- No functional problems, even with modern trucks
- Extremely low maintenance costs
- Component of the overall loading solution, including door and dock leveller



Function sequence



The following risks of accidents are prevented by the use of the Calematic System:

Risk of an **early departure** as there is no communication between the loader and HGV driver.

Risk from the **HGV moving**, caused by the forklift constantly driving into the vehicle. The HGV is constantly moved forwards until the support surface of the dock leveller is no longer sufficient, and it slips from the vehicle.

Structure

The Calematic System is designed in such a manner that it can be used everywhere: in new constructions as well as at existing loading bays. Thanks to the flat installation recessed in the courtyard ground, damage to the vehicle is avoided when manoeuvring. The system is easy to clean and contamination will not lead to failure. Calematic can be used under all weather conditions.

Calematic SC (single chock)

- Standard equipment
- 1 Row with 8 wheel chocks
 - 6 cover plates in 1/2 sizes
 - Active operation
 - Concrete frame
 - Compressed air operated wheel chocks

- Options
- 2 rows with 5 wheel chocks
 - 2 rows with 6 wheel chocks
 - Automatic operation
 - Additional traffic light display

Calematic DC (double chock)

- Standard equipment
- 1 Row with 5 double wheel chocks
 - 9 cover plates in 1/2 sizes
 - 2 cover plates in 3/4 sizes
 - Active operation
 - Concrete frame
 - Compressed air operated wheel chocks

- Options
- Version with 6 wheel chocks
 - Automatic operation
 - Additional traffic light display
 - the use of wheel guides is recommended

Electronic Drive System with Sensor and Traffic Lights

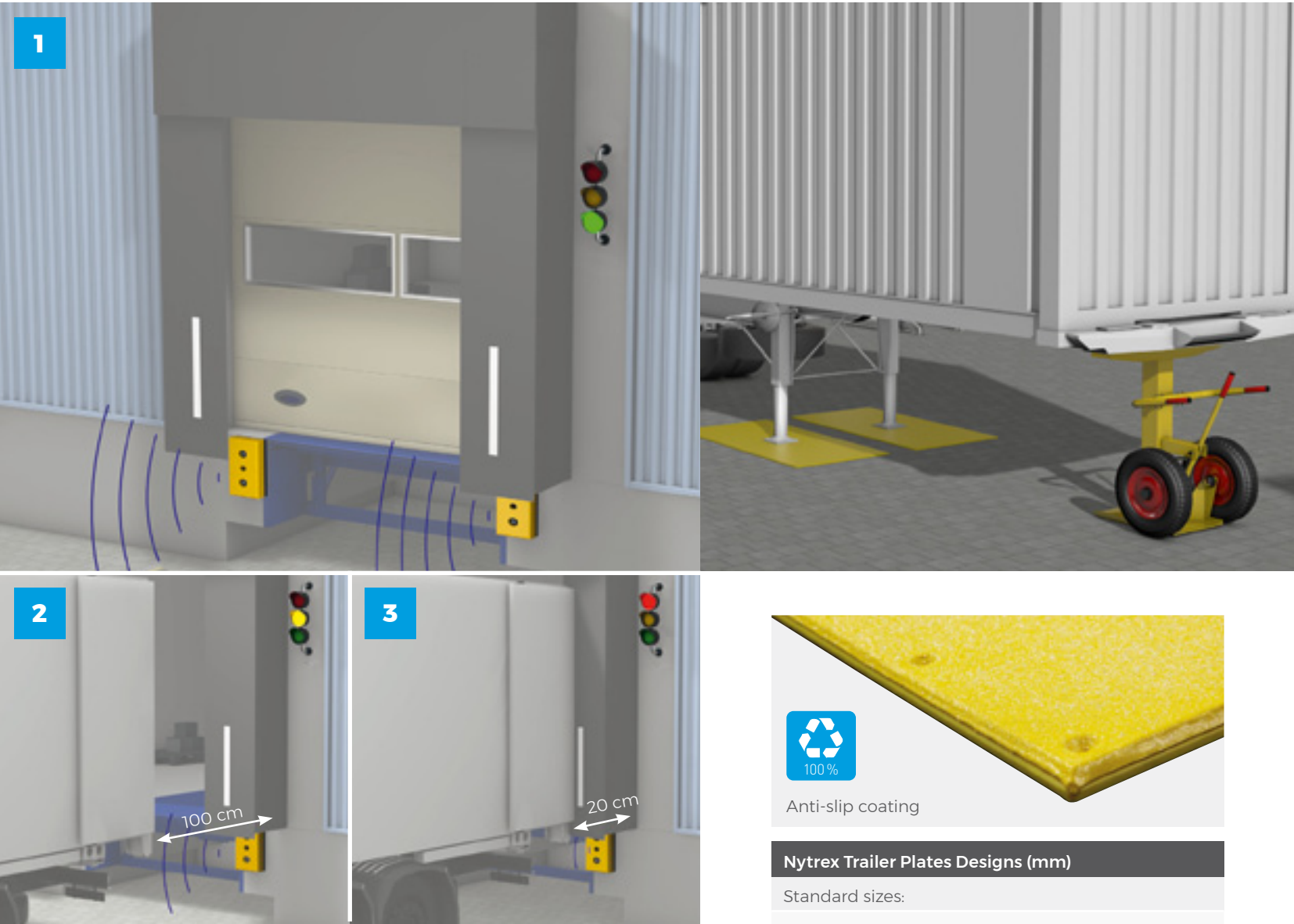
The ideal drive protection ensures that the lorry already stops before the bumper. Thus damage to the building, the lorry, and even the drive bumper are prevented. The NovoEASY supports the lorry driver in the easiest possible way. The sensors, which are protected in a yellow drive bumper made of high-performance plastic, measure the interval between the lorry and the loading ramp and inform the driver via a display element (e. g. traffic lights).

Product benefits

- High-performance plastic in signal yellow
- Distance measurement (Lorry – Building) with display via exterior traffic lights
- Trouble-free function for almost all truck versions. Adoptions may be necessary for swap bodies.

NovoEASY facilitates loading in three steps

- Step 1**
The lorry is still at a distance from the loading bay: The traffic light is green.
- Step 2**
The lorry is approx. 100 cm before the loading bay: The traffic light switches to yellow. The driver shows increased levels of attentiveness.
- Step 3**
The lorry is 20 cm away from the loading bay, just before the bumper: The traffic light switches to red. The driver stops the vehicle.



Designs (mm)	
500 x 250 x 130	
1 sensor, LED traffic lights red/yellow/green	
2 sensors, LED traffic lights red/yellow/green	

Evaluation	
Building protection	★★★★★
Durability	★★★★★
Spring deflection	★★★★★
Life Cycle Cost	★★★★★
Visibility	★★★★★
Overall rating: 25	

NYTREX TRAILER PLATES AND SAFETY JACK

Nytrex Trailer Plates – Permanent surface protection in the loading zone

The Nytrex Trailer Plates guard against damage to concrete, bitumen or pavement surfaces, thus preventing expensive repairs in the loading bays.

Available with fastenings to or into the floor, suitable for concrete, bitumen or pavement surfaces.

Product benefits

- Nytrex high-performance plastic in signal yellow
- Suitable for high loading frequency
- Optional with anti-slip coating

Safety Jack – Telescopic loading support

The Safety Jack helps increasing safety during the loading and unloading of trailers/semi-trailers with up to 40 t total weight. This can effectively prevent tilting of the semi-trailer. According to BGI 582 and BGI 603, additional securing during loading and unloading is strongly recommended by trade associations.

Product benefits

- More safety during loading and unloading processes
- Extra wide massive steel construction with large base plate
- Extra large cross beam
- Height-adjustable
- Adjusting by gas pressure spring
- Ergonomically-shaped grips for easy handling
- TÜV-certified

Nytrex Trailer Plates Designs (mm)	
Standard sizes:	
2000 x 1000 x 16	
1000 x 1000 x 16	
1000 x 500 x 16	
Non standard sizes readily available.	
Technical data	Safety Jack
Length	550 mm
Width	760 mm
Height	1020-1340 mm
Weight	70 kg
Cross member	760 x 120 mm
Base plate	470 x 425 mm
Air-filled wheels	ø 380 mm

BUMPER SYSTEMS

Different loading situations necessitate different bumpers. A determining factor is the right solution for the customer. For this purpose, mydocking provides a broad range of different systems. Four different criteria are used as a decision aid. As a matter of principle, the more stars a model achieves in one of the criteria, the higher the quality of the product is going to be.



Rubber bumpers

Rubber impact bumper

- high-quality new rubber compound
- especially abrasive-resistant and hard wearing
- Spring deflection up to 20 mm



Steel bumpers

with inside rubber core

- Spring deflection up to 80 mm
- wear-free
- galvanized



NovoLift

height-adjustable buffers

- No limitations when loading swap bodies
- Multiple use 2D
- length of stroke 250 mm
- Lasts 7-10x longer than rubber
- Suitable for high loading frequency



Nytrex F

high-performance Nytrex bumper in signal yellow

- Lasts 7-10x longer than rubber
- Suitable for high loading frequency



NovoSlider

the unique design

- Nytrex high-performance plastic in signal yellow
- Height-adjustable front part
- Spring deflection up to 25 mm
- Lasts 7-10x longer than rubber
- Suitable for high loading frequency



NovoSlider L

No limitations when loading swap bodies

- Nytrex high-performance plastic in signal yellow
- Height-adjustable front part
- Spring deflection up to 25 mm
- Lasts 7-10x longer than rubber
- Suitable for high loading frequency

PRODUCT EVALUATION


Building protection: Indicates to what extent the respective solution protects the building from impact damage.


Durability: Information on relative durability in the case of correct use.


Spring deflection: The longer the spring deflection of the bumper is, the more likely damage to the vehicle and building is going to be prevented.

Life Cycle Cost: In addition to material expenses, the cost for the replacement of worn bumpers and their durability is also included in the cost evaluation.

Visibility: The latest evaluation criterion is the visibility of the buffer for the lorry driver. Because the current products were almost always black, both rubbers and steel buffers, there was no differentiation criteria. This has changed with the development of the Nytrex buffer. The yellow signal colour presents considerable advantages over the other systems; hence this criterion has now been included in the evaluation.

 Nytrex part is rotatable and thus doubly usable.

 Nytrex part is rotatable and reversible and thus quadruple usable.

Item		Design (mm)	Recommended loading frequency		Building protection	Durability	Spring deflection	Life Cycle Cost	Visibility	OR
	Rubber buffers	400 x 80 x 70	low		★★★★★	★★★★★	★★★★★	★★★★★	★★★★★	7
		250 x 250 x 90 or 250 x 250 x 140	low		★★★★★	★★★★★	★★★★★	★★★★★	★★★★★	8
		500 x 250 x 90 or 500 x 250 x 140	low to medium		★★★★★	★★★★★	★★★★★	★★★★★	★★★★★	10
	Steel buffers	AZPK	500 x 250 x 140 or 800 x 250 x 140		high	★★★★★	★★★★★	★★★★★	★★★★★	20
			TwinSet 800/500 500 x 250 x 140 and 800 x 250 x 140		high	★★★★★	★★★★★	★★★★★	★★★★★	20
		AZJ	500 x 250 x 210 or 800 x 250 x 210		high	★★★★★	★★★★★	★★★★★	★★★★★	21
			TwinSet 800/500 500 x 250 x 210 and 800 x 250 x 210		high	★★★★★	★★★★★	★★★★★	★★★★★	21
Item		Design (mm)			Building protection	Durability	Spring deflection	Life Cycle Cost	Visibility	OR
	NovoLift	600 x 250 x 140	■		★★★★★	★★★★★	★★★★★	★★★★★	★★★★★	20
	Nytrex F	500 x 250 x 80 or 750 x 250 x 80	■		★★★★★	★★★★★	★★★★★	★★★★★	★★★★★	20
		500 x 250 x 130 or 750 x 250 x 130		■	★★★★★	★★★★★	★★★★★	★★★★★	★★★★★	20
		TwinSet F7508 750 x 250 x 80 and 500 x 250 x 80	■		★★★★★	★★★★★	★★★★★	★★★★★	★★★★★	20
		TwinSet F7513 750 x 250 x 130 and 500 x 250 x 130		■	★★★★★	★★★★★	★★★★★	★★★★★	★★★★★	20
	NovoSlider	500 x 280 x 100 or 750 x 280 x 100	■		★★★★★	★★★★★	★★★★★	★★★★★	★★★★★	24
		500 x 280 x 140 or 750 x 280 x 140		■	★★★★★	★★★★★	★★★★★	★★★★★	★★★★★	24
		TwinSet 7510 750 x 280 x 100 and 500 x 280 x 100	■		★★★★★	★★★★★	★★★★★	★★★★★	★★★★★	24
		TwinSet 7514 750 x 280 x 140 and 500 x 280 x 140		■	★★★★★	★★★★★	★★★★★	★★★★★	★★★★★	24
	NovoSlider L	750 x 280 x 100			★★★★★	★★★★★	★★★★★	★★★★★	★★★★★	24
		750 x 280 x 140	■		★★★★★	★★★★★	★★★★★	★★★★★	★★★★★	24

For further information on our bumper systems, please refer to mydocking product data sheets.

OR = Overall rating

ACCESSORIES



Set of traffic lights

Traffic lights provide a visual warning to the driver and the loading bay operatives to indicate whether the bay is ready for docking or not.

The most common system used is traffic lights with individual (Red and Green) signal lights.

The two types of lights that are available are illuminated by LED light bulbs. LED lamps are much cheaper to maintain and far superior in quality and long life expectancy. In addition, LED lights provide significantly greater illumination even during periods of bright sunshine. The functions of the traffic light systems are agreed individually with the building users.



Safety wheel chocks

Safety wheel chocks ensure that Lorries remain static on the loading bay. However, a standard mechanical lorry safety chock only offers very limited safety assistance.

For this reason, electronic safety wheel chocks that are connected and interlocked electrically to the door and dock leveller is used. The dock leveller can only be operated once the safety wheel chock rests against the wheel.

A position sensor in the safety wheel chock ensures the dock leveller is safe to use. It is essential where applicable to also interlock the safety wheel chock to the traffic light system that visually indicate to both the lorry driver and loading bay operatives of the actual loading status.



Dock lights

When a lorry is docked against the loading bay ready to be loaded or unloaded, the rear of the trailer is always poorly lit making it difficult for the operative to see inside the trailer which can make the loading very difficult. The mydocking articulated angle poised Dock Light is the ideal solution. It is very easy to install adjacent to the inside of the docking doorway and illuminates the inside of the trailer fully by simply positioning of the articulated swivelling mounting arm.

- Design with 30-watt LED floodlights



Trailer Wheel guides

Another aid to prevent damage when docking are trailer wheel guides. In most cases, they consist of zinc-coated steel tubes that are mounted on the floor in pairs on each the loading dock approach. The lorry is thus steered and guided into the right position. If the lorry collides with the wheel guides, this is a clear sign to alert the driver that he is not positioned correctly.

Thus trailer wheel guides help prevent frequent damage to the dock shelters. Unloading is made easier thanks to a correctly positioned lorry.



INTELLIGENT LOADING – ENVIRONMENTALLY FRIENDLY AND EFFICIENT

Environmentally friendly use of resources

Mankind and nature are the focus of our efforts, by combining ecological and economic advantages. mydocking has recognized that the design of logistic processes is developing in the direction of ecological and energy efficiency.

Environmentally compatible use of resources, as well as the selection of the right products, are increasingly becoming competitive factors. And for shippers and service providers, it is equally important that their processes are aligned with environ-

mental aspects. That is why we make every effort to use 100 % recyclable materials. And it is also why we work so closely with suppliers, from whom we demand the fulfilment of the newest regulations.

Also our Green Solution – always that one idea ahead.

NYTREX IMPACT BUFFERS

Really tough

Nytrex represents the next step in the evolution of impact buffers. Nytrex, which was especially developed for this application, is known to be as good as indestructible, and it offers a superior level of ergonomics.

Especially for impact buffers, this material has unique advantages. Besides its excellent visibility for drivers, its high rigidity and simultaneous resistance against blocking (slipperiness) leads to a long service life.

Our extensive product range includes a large variety of models for every application.



EVERYTHING YELLOW

Innovation

Impact buffers made of Nytrex are the new standard, and their characteristics clearly exceed those of rubber and steel buffers.

Saving costs

Nytrex impact buffers amortize themselves quickly, and they last between 7 and up to 10 times longer than rubber, because of the possibility of rotating the plastic element.

Protection of buildings

High tensile-strength plastic, in a signal-yellow colour, not only ensures safety, but also provides perfect protection at buildings and for freight lorries.

Increasing safety

The excellent visibility for freight lorry drivers, as well as the low installation depth, set unparalleled safety standards.

Broad product range

For individual solutions at your loading station, these products are available in a variety of models, forms, sizes and installation depths.

100 % recyclable

Green solutions for your logistics: Impact buffers made of Nytrex are both economic and environmentally friendly.



REALLY TOUGH

THE NEXT LEVEL
Nytrex Buffer Systems

NOTES

Handwriting practice area with horizontal lines.



mydocking

docking Solution und Service GmbH
Springrad 4
30419 Hannover

Phone: +49 (0)511 76 36 79-0
Fax: +49 (0)511 76 36 79-90
Email: info@mydocking.com
Internet: www.mydocking.com